



FALL 2020:
Proposed Locations

COMMUNITY HOPE GARDENS

PROPOSED SITES FALL 2020:

Blue Hills: 2 Sites

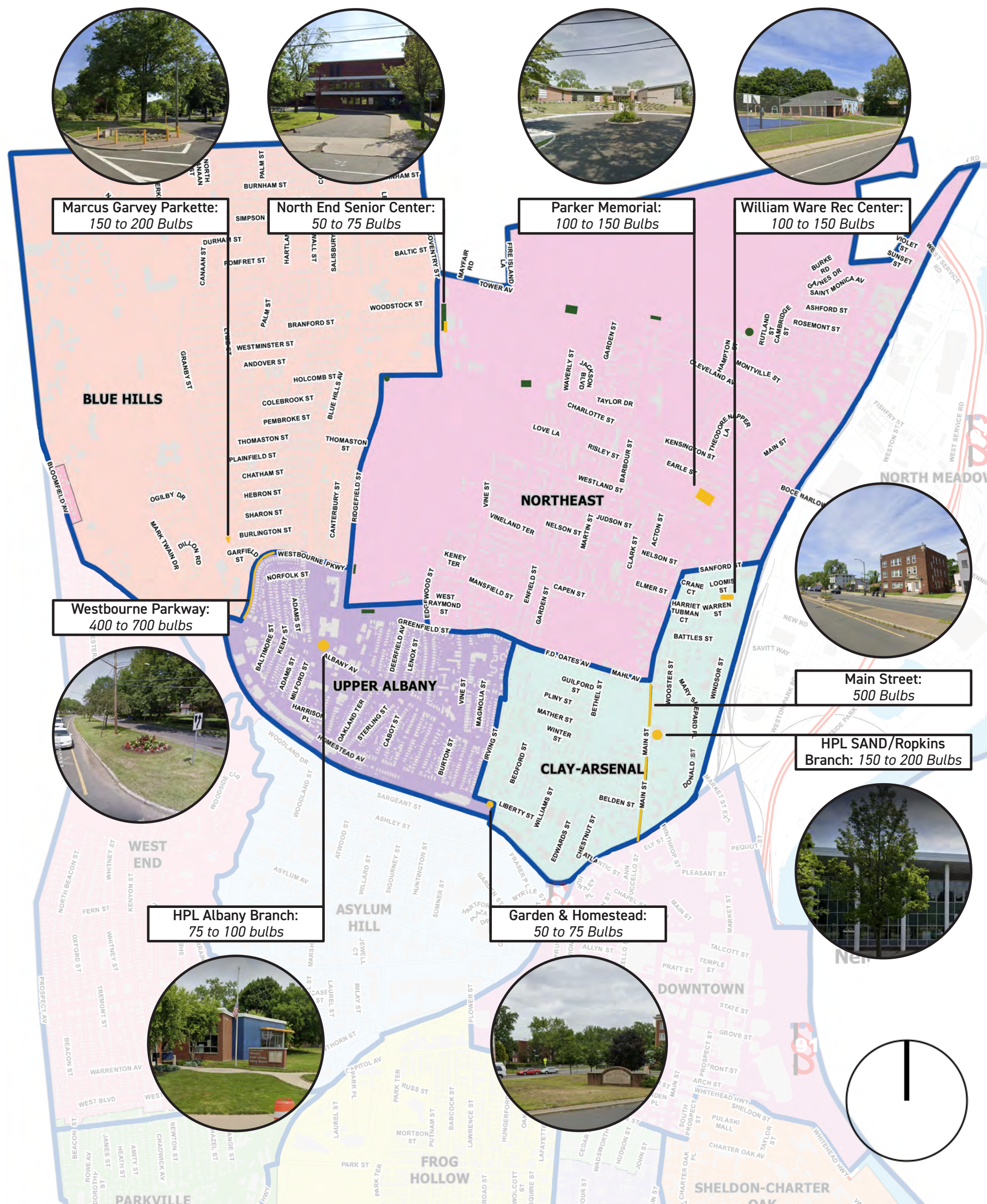
Clay Arsenal: 3 Sites

Northeast: 2 Sites

Upper Albany: 2 Sites



Existing Sites



Marcus Garvey Parkette:
150 to 200 Bulbs



North End Senior Center:
50 to 75 Bulbs



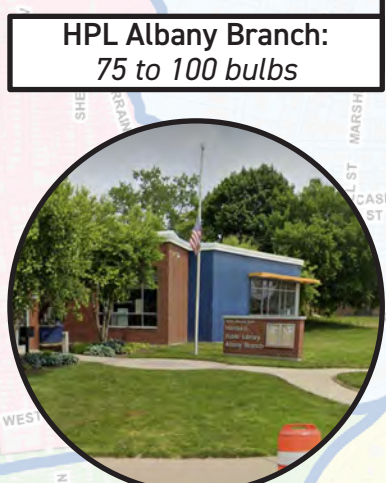
Parker Memorial:
100 to 150 Bulbs



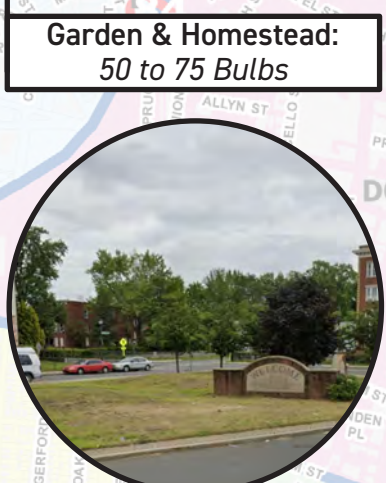
William Ware Rec Center:
100 to 150 Bulbs



Westbourne Parkway:
400 to 700 bulbs



HPL Albany Branch:
75 to 100 bulbs



Garden & Homestead:
50 to 75 Bulbs



Main Street:
500 Bulbs



HPL SAND/Ropkins Branch:
150 to 200 Bulbs



HPL Albany Branch:
75 to 100 bulbs

Details: Planting in front or closer to parking lot around trees

Concerns: Mowing



Marcus Garvey Parkette:
150 to 200 Bulbs

Details: Beginning in semi-circle underneath sign, planting in rows across entire bed.

Concerns: Need mulch for soil



William Ware Rec Center:
100 to 150 Bulbs

Details: Planting rows underneath existing mural

Concerns: None



Main Street:
500 Bulbs

Details: 25 bulbs per bed around each tree (or in bed if no tree). 20 beds total

Concerns: Safety of volunteers when planting



Garden & Homestead:
50 to 75 Bulbs

Details: Bulbs planted in rows on hill behind sign

Concerns: None



Westbourne Parkway:
400 to 700 bulbs

Details: Beginning at Ridgefield, about 25 bulbs around each tree - planting on first two or three medians

Concerns: Mowing



North End Senior Center:
50 to 75 Bulbs

Details: Planting two rows under windows to the right of entrance

Concerns: Might need mulch



Parker Memorial:
100 to 150 Bulbs

Details: Planting in rows along hill near entrance

Concerns: Need mulch for soil



HPL SAND/Ropkins Branch:
150 to 200 Bulbs

Details: Planting about 20 bulbs in circles around each of the nine trees out front.

Concerns: Mowing

PARKS & GREEN SPACES LOCATIONS

1 Keney Park

COMMUNITY HOPE GARDENS

PROPOSED SITES FALL 2020:

Asylum Hill: 2 Sites Frog Hollow: 2 Sites
Parkville: 2 Sites West End: 2 Sites

Existing Sites



Farmington Median:
200 to 300 Bulbs



295 Farmington Ave:
50 to 100 Bulbs



Gaullaudet Square:
150 to 200 Bulbs



West Blvd & Sisson:
50 to 100 bulbs



George Day Playground:
50 to 75 Bulbs



Dwight Branch Perimeter:
200 to 250 Bulbs



Fairfield & New Britain:
50 to 100 Bulbs



Capitol & Park Terrace:
100 to 150 Bulbs



Farmington Median:
200 to 300 Bulbs

Details: Planting bulbs in medians near existing bulbs

Concerns: Width of Medians



295 Farmington Ave:
50 to 100 Bulbs

Details: Planting in two corner beds at Farmington/ Marshall

Concerns: Not City Property; Litter removal first



Gaullaudet Square:
150 to 200 Bulbs

Details: Planting bulb around statue and then moving back in rows towards Broad Street

Concerns: Mowing



West Blvd & Sisson:
50 to 100 bulbs

Details: Planting bulbs in beds in front of fire house

Concerns: Width of Medians



Capitol & Park Terrace:
100 to 150 Bulbs

Details: Planting in corner near intersection along street to mural

Concerns: Construction



George Day Playground:
50 to 75 Bulbs

Details: Planting bulbs around perimeter in single row

Concerns: None



Dwight Branch Perimeter:
200 to 250 Bulbs

Details: Planting bulbs around perimeter, near parking lot

Concerns: None



Fairfield & New Britain:
50 to 100 Bulbs

Details: Planting in circle around sign at corner across from Trinity & Fire Department

Concerns: Mowing

PARKS & GREEN SPACES LOCATIONS

- 1 Pope Park
- 2 Zion Hill Cemetery
- 3 Elizabeth Park

COMMUNITY HOPE GARDENS

PROPOSED SITES FALL 2020:

SW/BTR: 3 Sites

Barry Square: 2 Sites



Existing Sites



Flatbush & Brookfield:
150 to 200 Bulbs



460 New Britain (Free
Center): 100 to 150 Bulbs



Rocky Ride Playground:
75 to 100 Bulbs



Campfield Green:
50 to 75 Bulbs



Flatbush & Brookfield:
150 to 200 Bulbs

Details: Planting bulbs
around seating and along
Walking Trail

Concerns: Accessibility &
Maintenance



460 New Britain (Free
Center): 100 to 150 Bulbs

Details: Planting along
front and around tree

Concerns: None



Campfield Green:
50 to 75 Bulbs

Details: Planting around
perimeter, one or two rows

Concerns: None



Chandler Street Triangle:
60 - 100 Bulbs

Details: Extending existing
circle out or planting
between existing plants

Concerns: None



Bobby Sands Memorial:
50 to 75 Bulbs

Details: Planting around
existing bed in two rows

Concerns: None



Rocky Ridge Playground:
75 to 100 Bulbs

Details: Planting near
playground and/or sign near
building

Concerns: None

PARKS & GREEN SPACES LOCATIONS

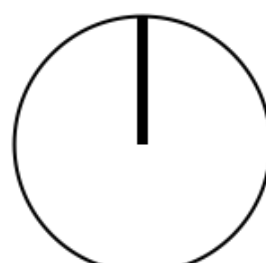
1 Goodwin Park

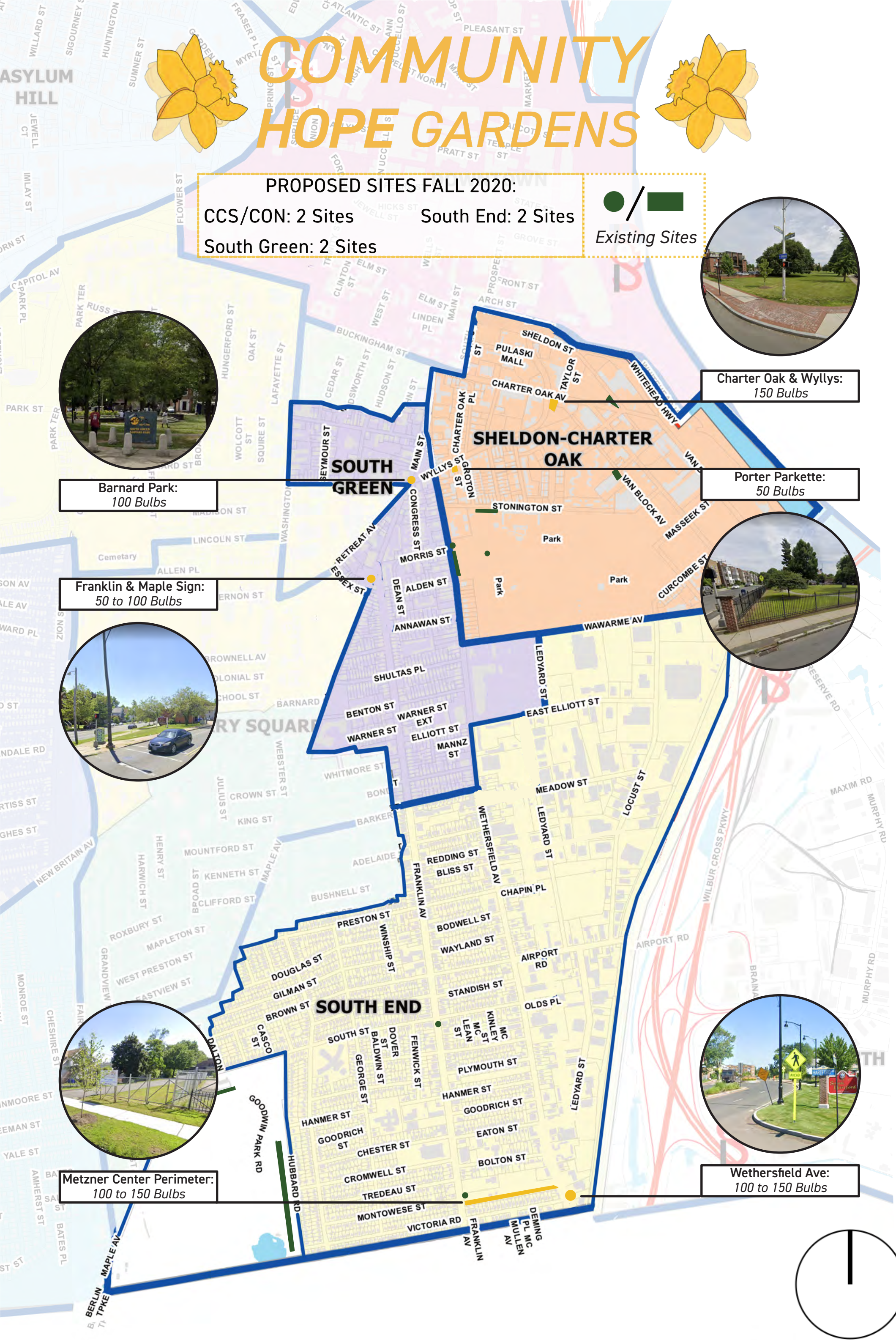


Chandler Street Triangle:
60 - 100 Bulbs



Bobby Sands Memorial:
50 to 75 Bulbs





PROPOSED SITES FALL 2020:
CCS/CON: 2 Sites South End: 2 Sites
South Green: 2 Sites

● / ■
Existing Sites

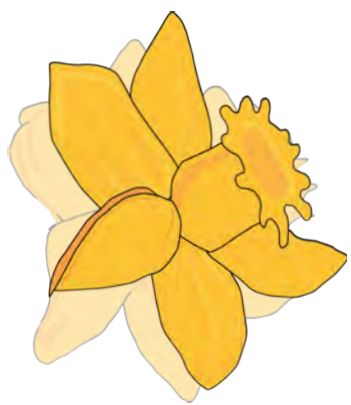
Charter Oak & Wyllys:
150 Bulbs

Porter Parkette:
50 Bulbs

Wethersfield Ave:
100 to 150 Bulbs



1 Colt Park 2 Goodwin Park



COMMUNITY HOPE GARDENS



Sites not included, could be added
in the future



South End
Senior Center

Reasoning: Small green patch in front already has flowers, could be planted at in the future but not large amount of space.



Hartford Public Library
Camp Field Branch

Reasoning: Back-up location for Campfield Green, planting location right across the street.



Hartford Public Library
Barbour Branch

Reasoning: Not enough green space or visibility as a planting location.



Hartford Public Library
Rawson

Reasoning: Not a gateway/high visibility location, could still engage students for other sites. Location is also too large, mowing is a bigger concern.



Hartford Public Library
Park Branch

Reasoning: New location under construction, could add in the future!



Arroyo Recreational
Center

Reasoning: In Pope Park, group already planning to plant in the Park. Could encourage them to plant near here.

