

# hartford early childhood working groups

## CREATING A CITYWIDE EARLY LEARNING COMMUNITY

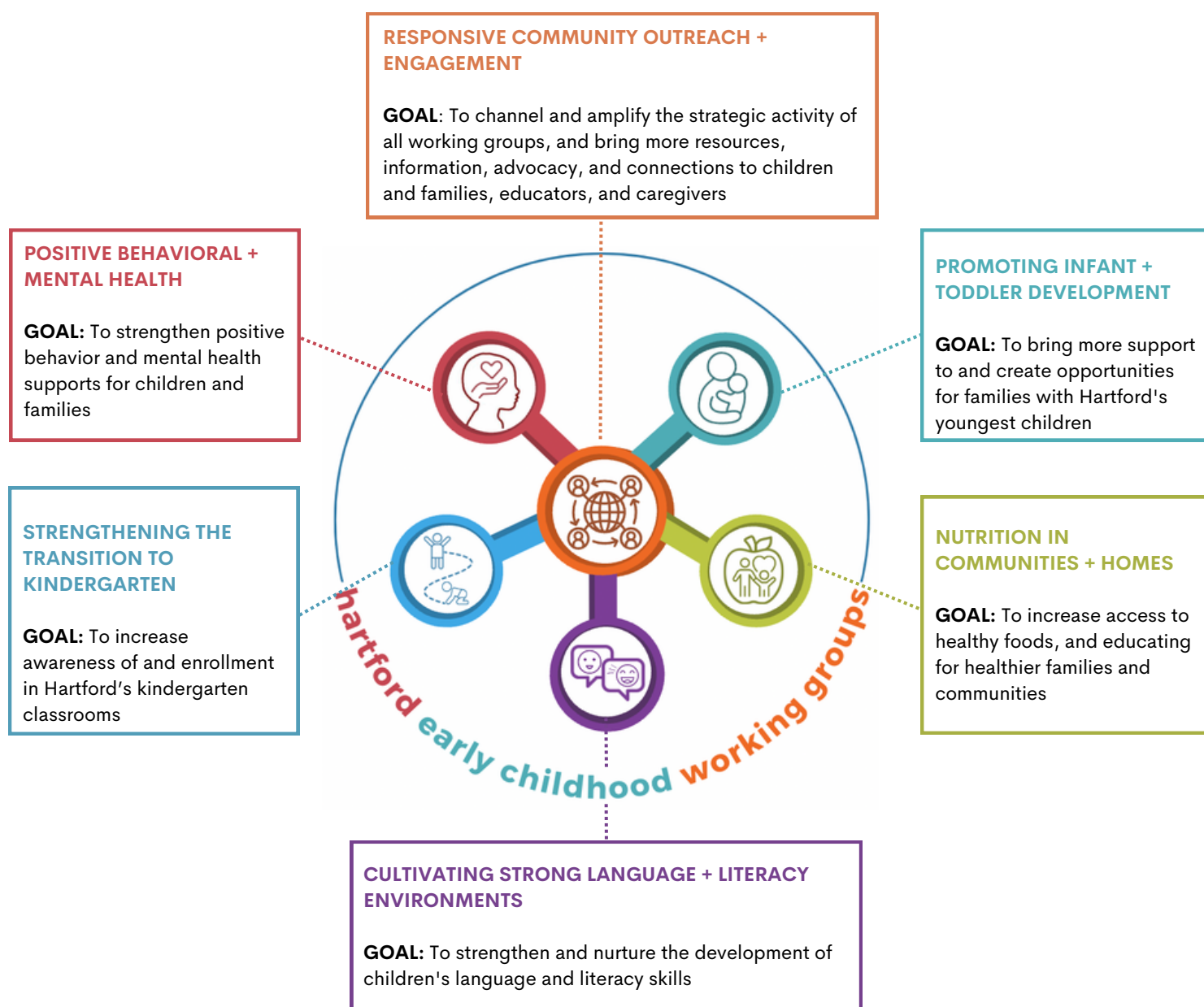
In Fall 2022, The Department of Families, Children, Youth and Recreation, in collaboration with the Mayor's Cabinet for Young Children and community partners, reframed the approach to unite and strengthen Hartford's young children and families. The citywide Early Childhood Working Groups marked the launch of this new approach.

### WHAT ARE THE EARLY CHILDHOOD WORKING GROUPS?

The working groups are designed to drive strategic, citywide efforts that promote early learning. The work of the groups is guided by the principles of *collective impact*—**breaking down siloes, increasing coordination + alignment, and driving innovations** in policy and practice.

#### THE CHARGE:

*To take a citywide lens and engage in innovative action guided by specific goals and areas of need.*

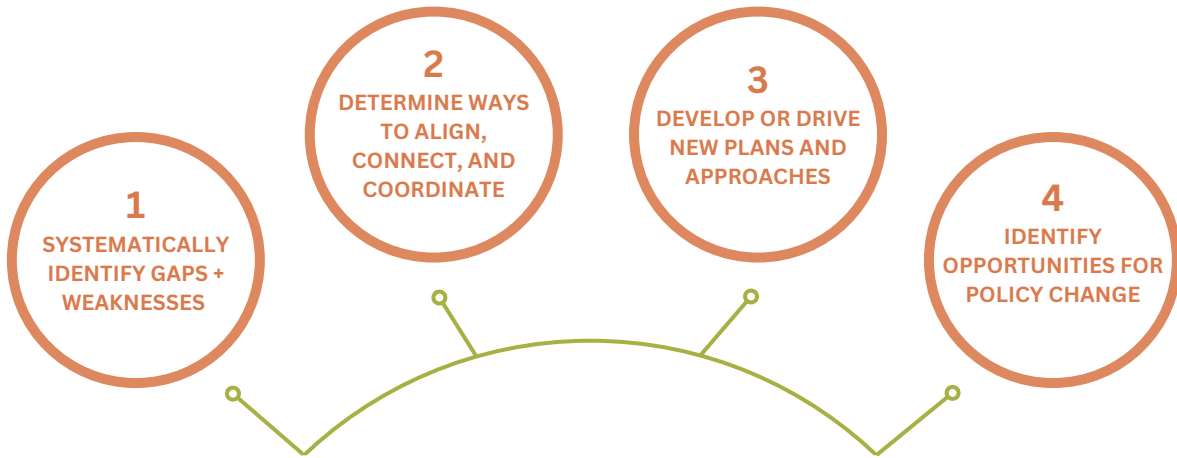


Each working group meets monthly to execute on the working group's goals and strategies, using key data to inform ongoing work and adjustments, and to cultivate a collaborative learning community for action.

## WHAT IS THE "WORK" OF THE WORKING GROUPS?

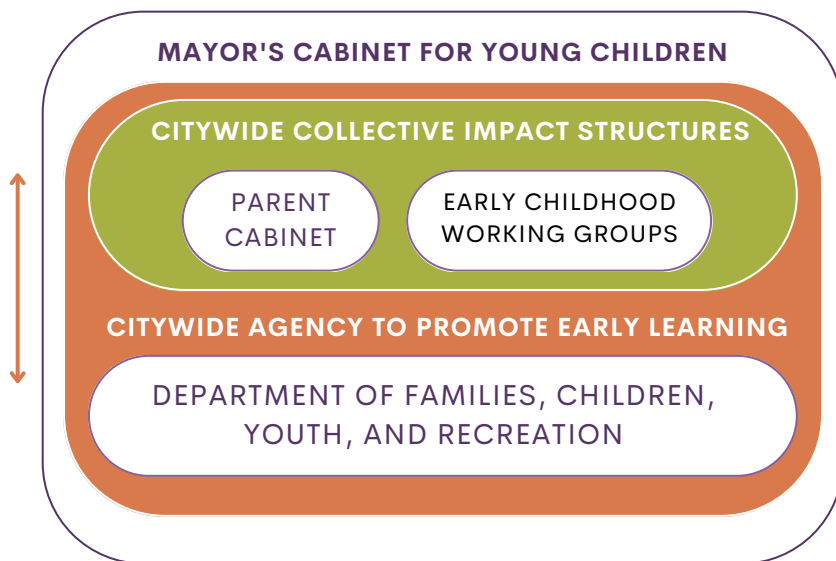
### COLLECTIVE IMPACT STRATEGIES AND SOLUTIONS

Each working group is created to focus on an identified citywide need. Based on the principles of Collective Impact, there are four key types of strategic "work" for the working groups:



*What are the problems and issues that are surfacing through data gathering and use, and what are the high-impact things we can do together that no one organization in Hartford could do alone?*

## WHAT IS THE WORKING GROUPS CONTEXT + MEMBERSHIP?



The working groups are part of a dynamic system to support early learning in Hartford. This dynamic system includes the Parent Cabinet, whose citywide work is also guided by collective impact principles, and the Department of Families, Children, Youth, and Recreation, all of which work in collaboration, and together inform the work of the Mayor's Cabinet for Young Children.

Each working group's membership is deliberately cross-sector—there are members from public agencies and organizations and members from community-based organizations, each connected to the area of focus.

A collective impact approach to city-wide work that brings cutting-edge strategies and solutions to the Hartford community, and drives a cradle-to-career portfolio for thriving citizens.

