



CITY OF HARTFORD

HILLSIDE AVE TRAFFIC CALMING

Traffic Calming Objectives

- Develop innovative, flexible projects for quicker deployment, evaluation, and adjustment
- Reduce speeds
- Discourage aggressive driving
- Reduce crashes and prevent injuries/fatalities
- Protect vulnerable users such as pedestrians, bicyclists, and other non-vehicular users

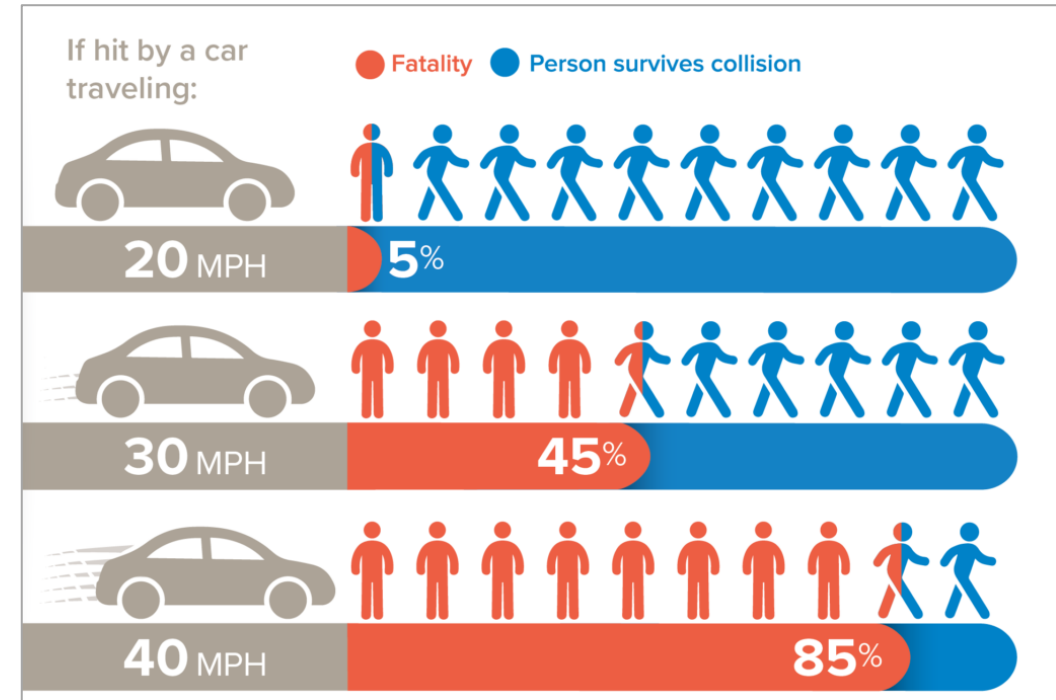


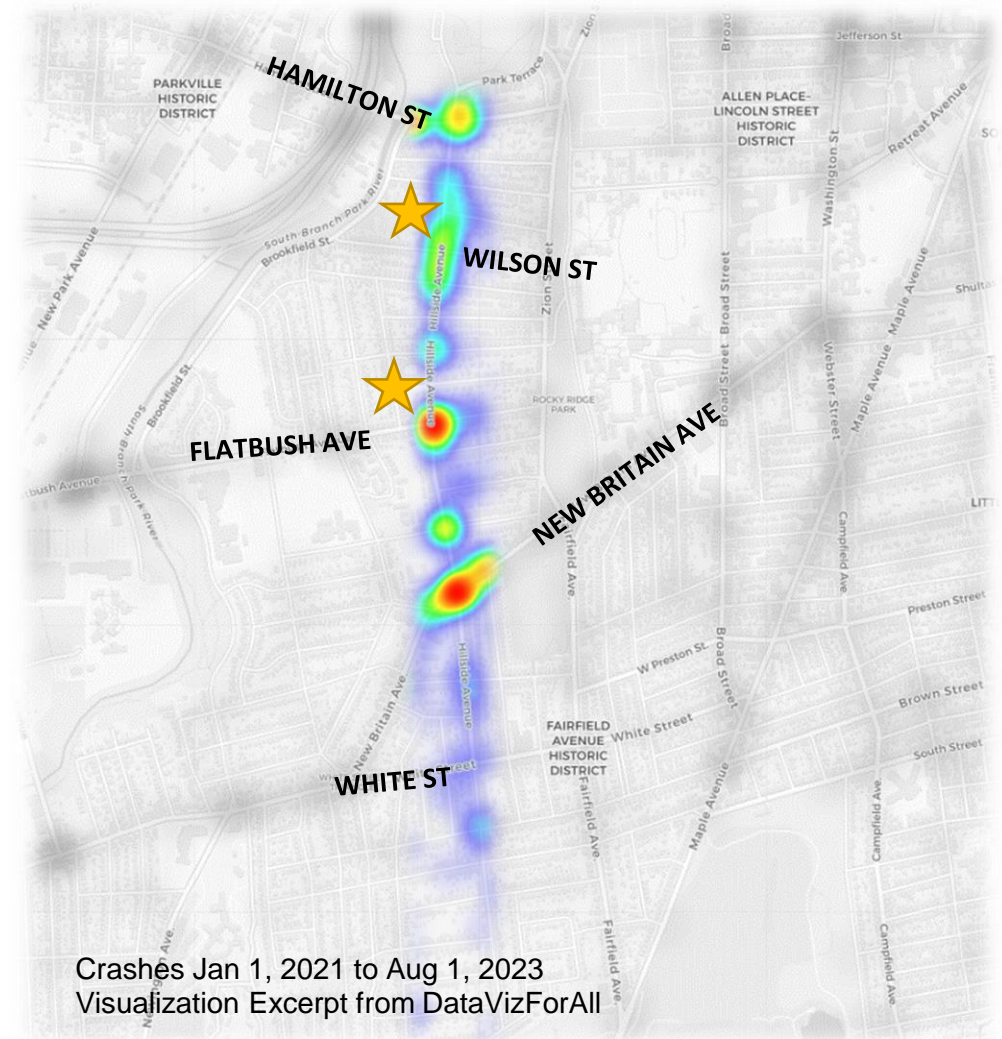
Image Source: Smart Growth America

<https://smartgrowthamerica.org/why-safety-and-speed-are-fundamentally-incompatible-a-visual-guide/>



Existing Conditions

- About 4,700 vehicles/day (2021)
 - Posted Speed Limit: 30 MPH
 - Average Speed: 23 MPH
 - Peak Recorded Speed: 66-70 MPH
- Institutions and Amenities:
 - ★ **Moylan Elementary and McDonough Middle Schools**
 - Pope Park
- Existing Street Parking
- Bus Route 63
- Partial Existing Sharrows





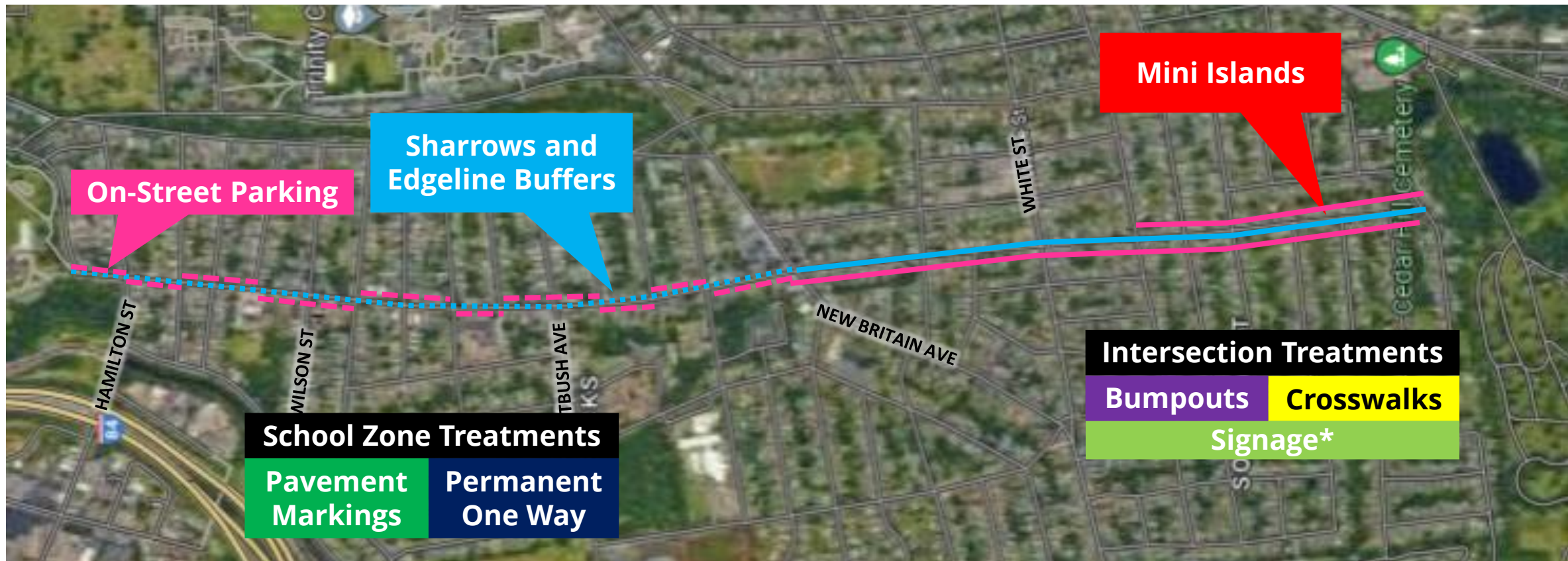
Hillside Avenue

The following slides are for general illustrative purposes and may be subject to change.



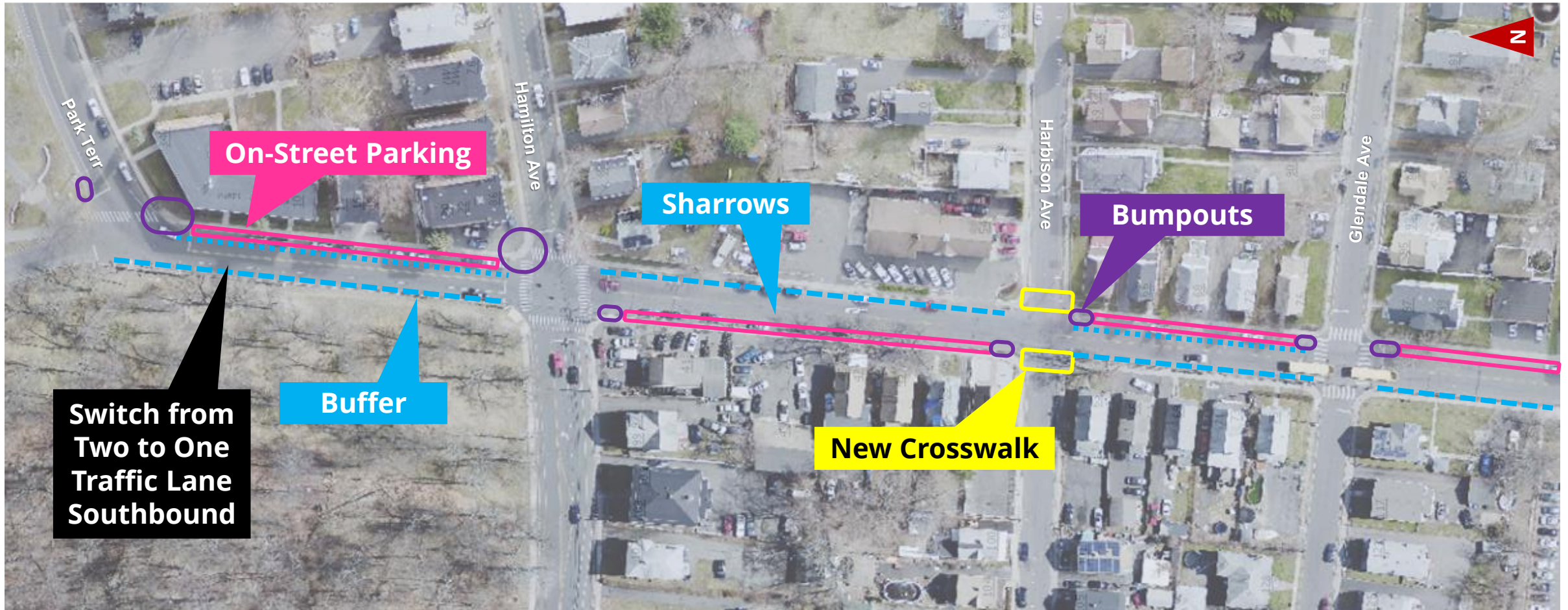
Overview of Treatments

Below is a general overview of treatments along the Hillside Ave corridor.

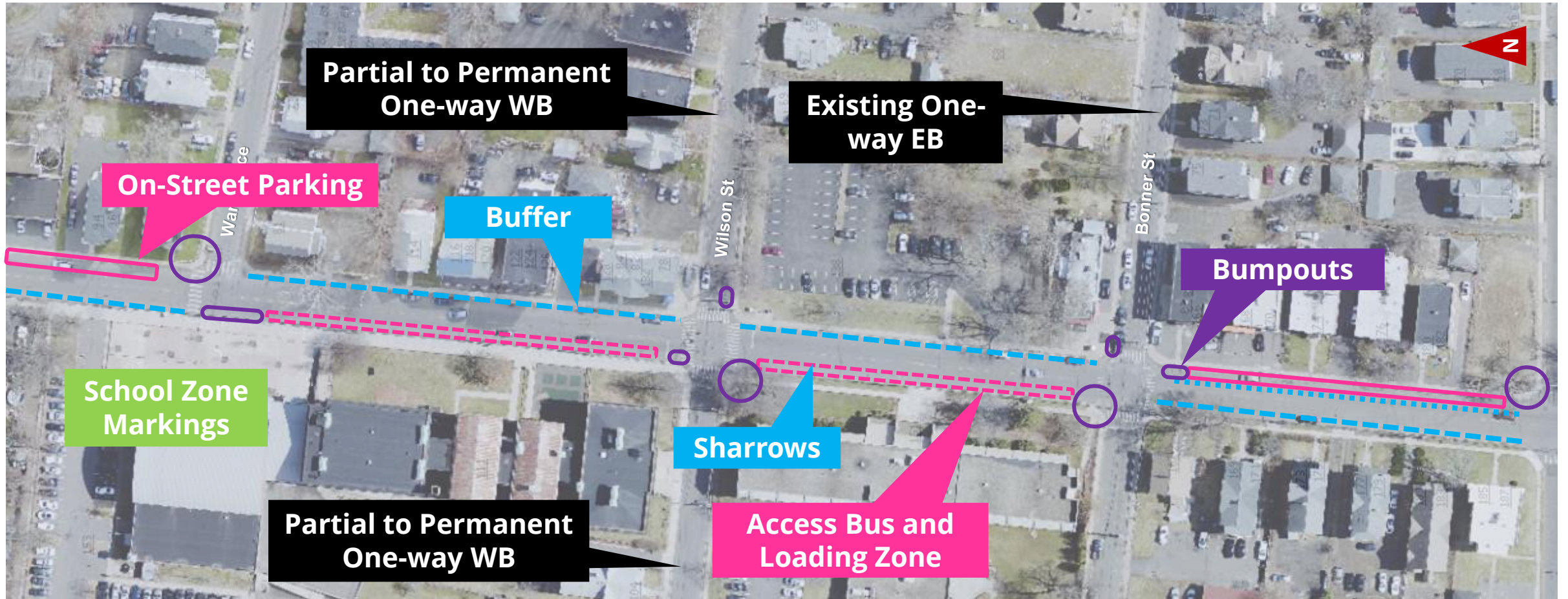


*New / Refreshed signage will vary by location and shall correspond with applicable treatments.

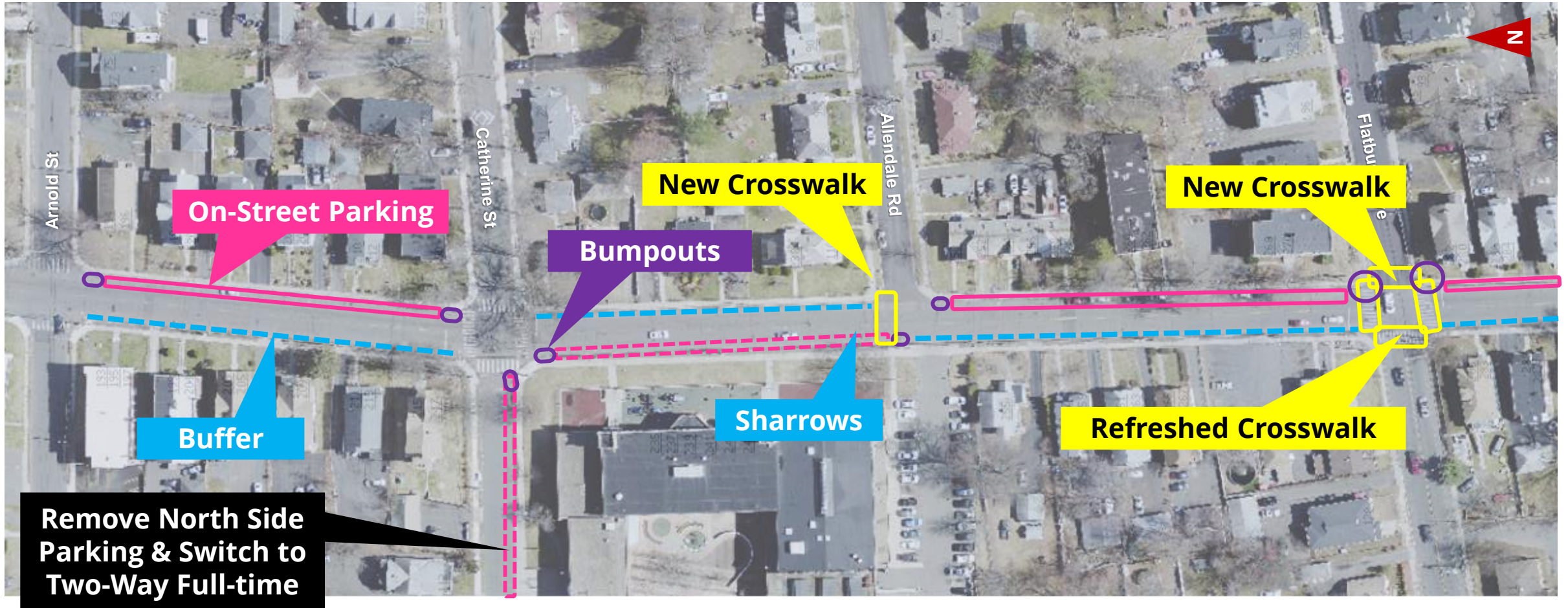
Park Terrace to Glendale Ave



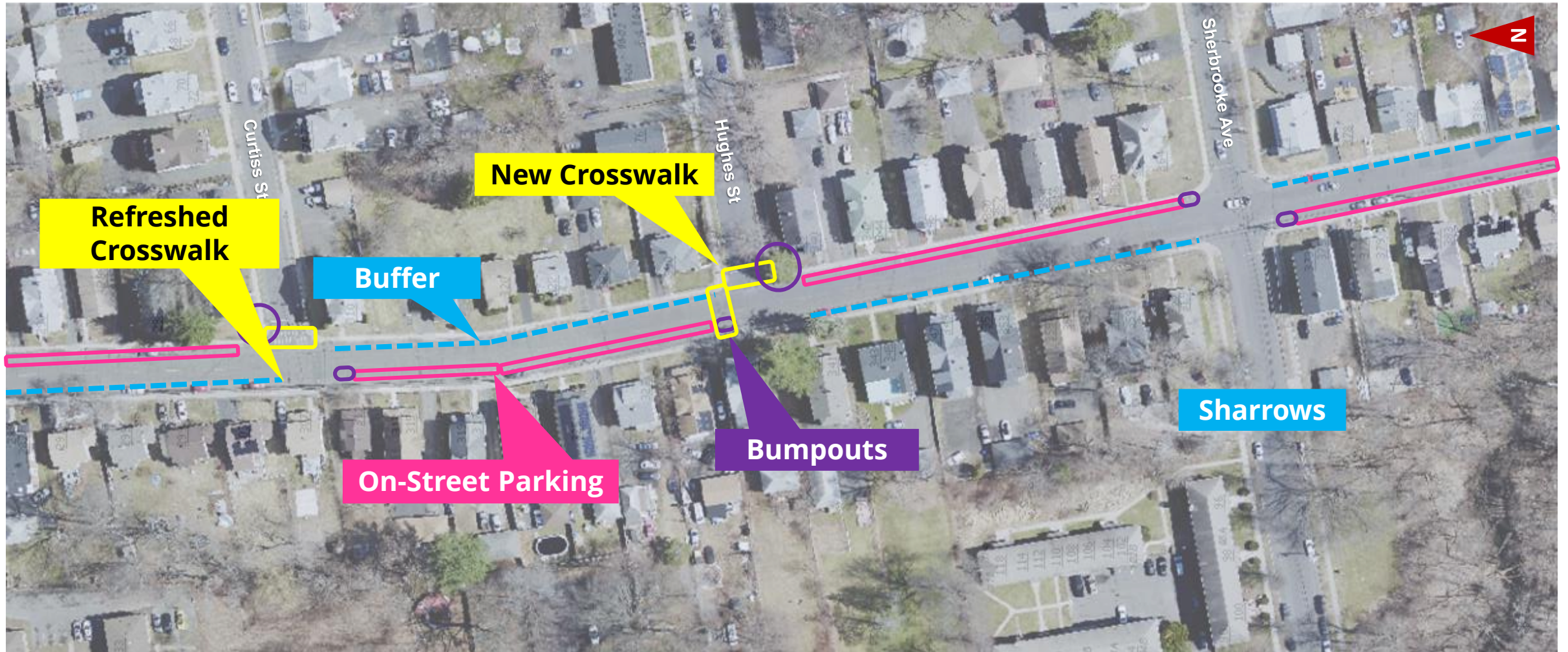
Ward Place to Arnold Street



Arnold Street to Flatbush Ave

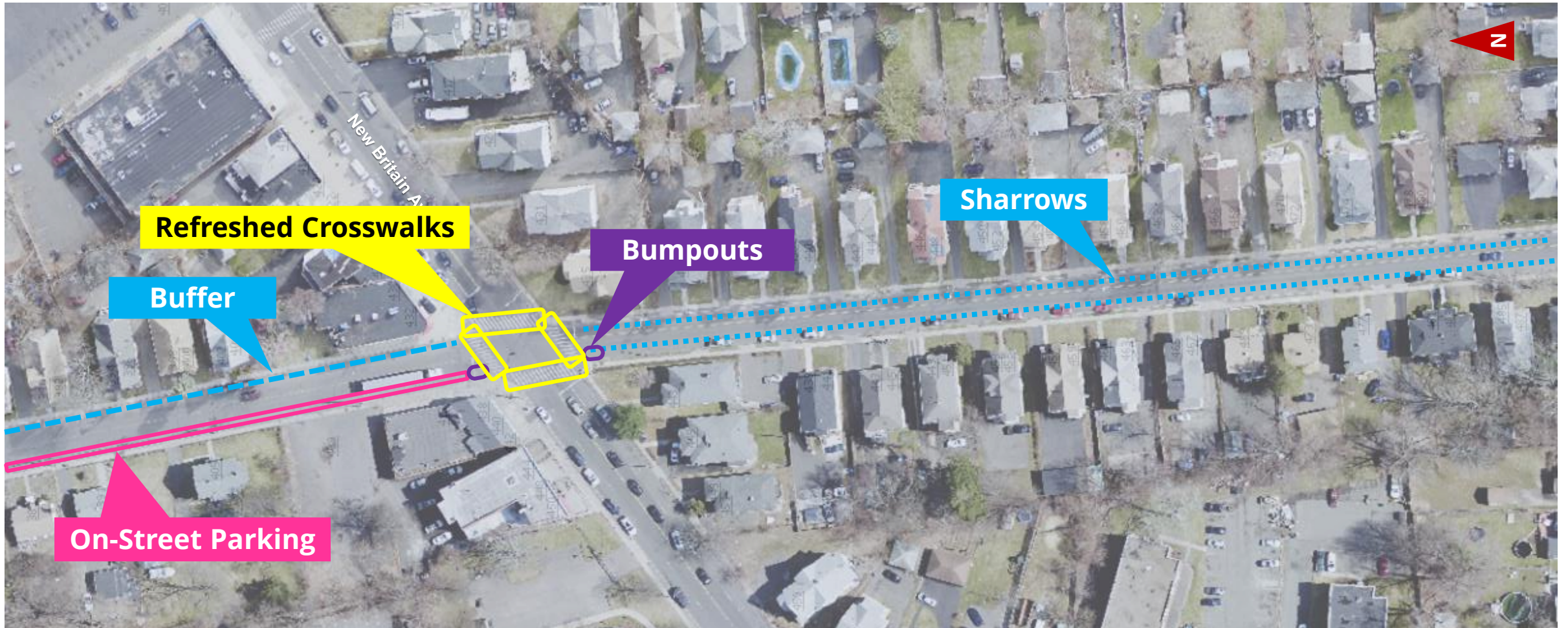


Curtiss Street to Sherbrooke Ave



New Britain Ave to Ansonia Street

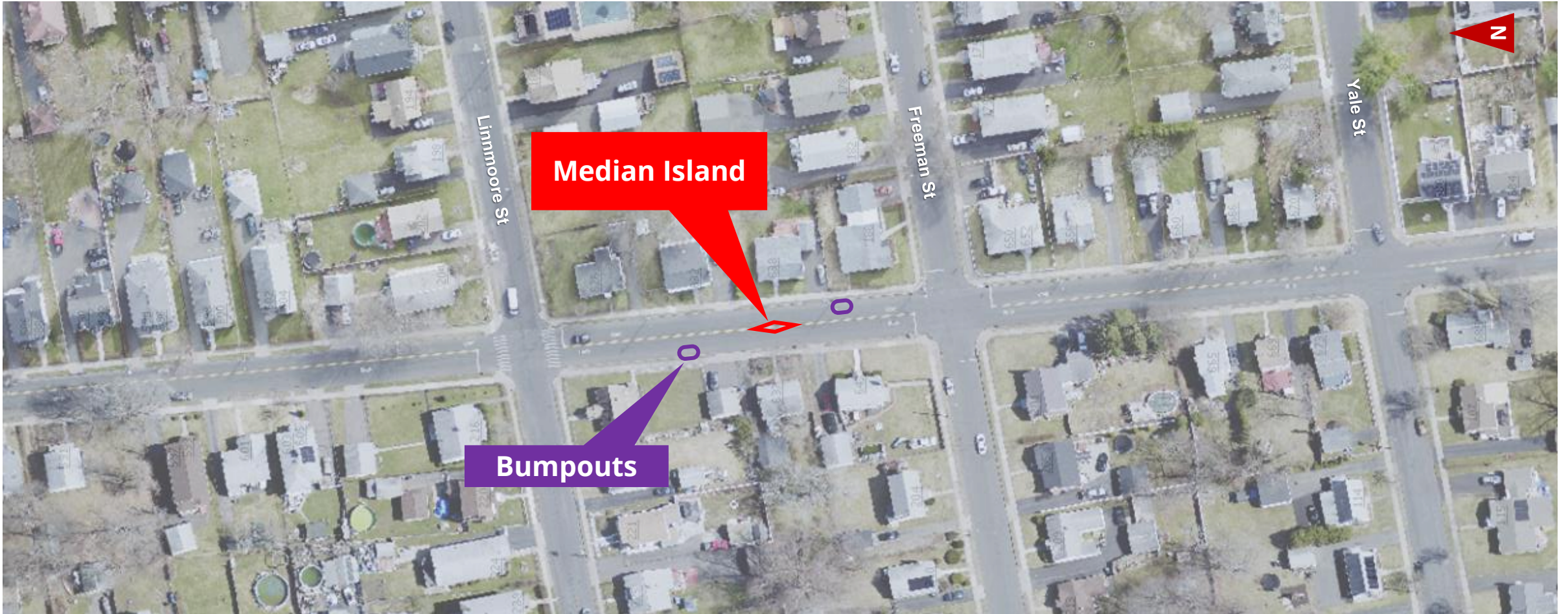
5



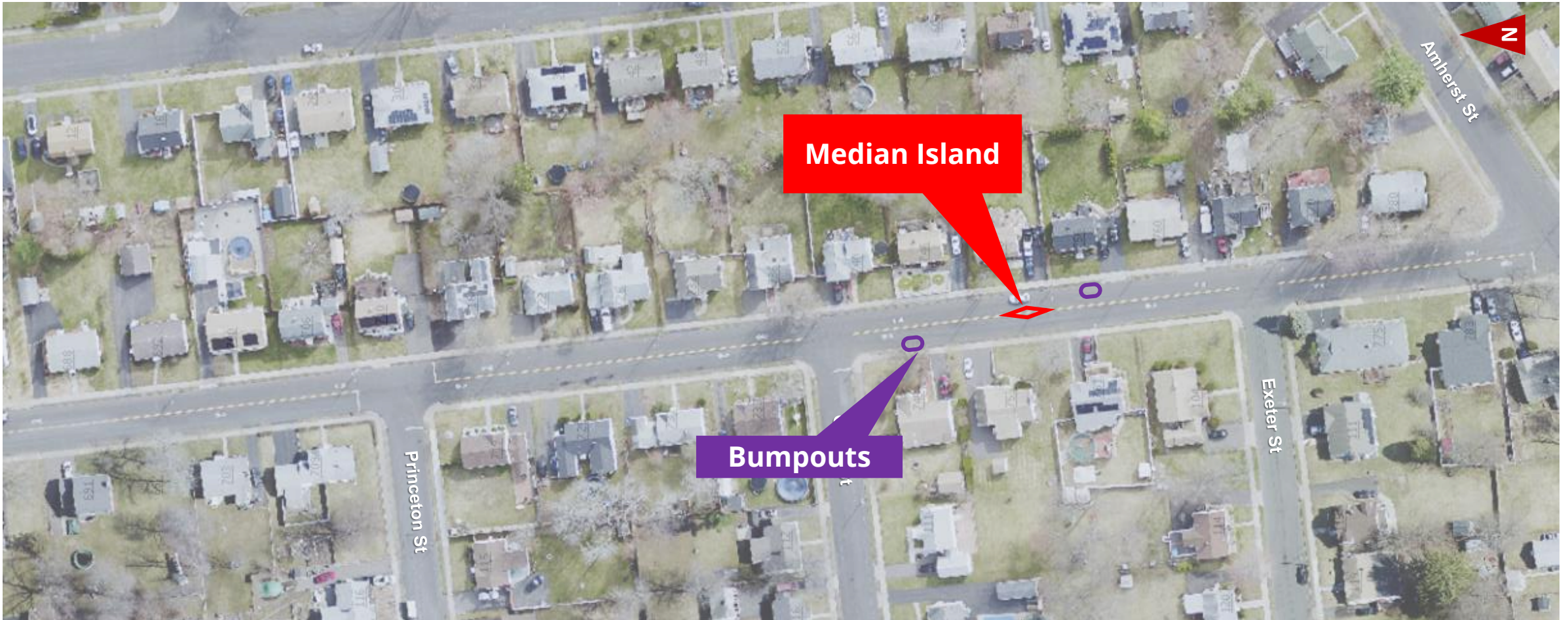
Ansonia Street to White Street



White Street to Yale Street



Yale Street to Amherst Street



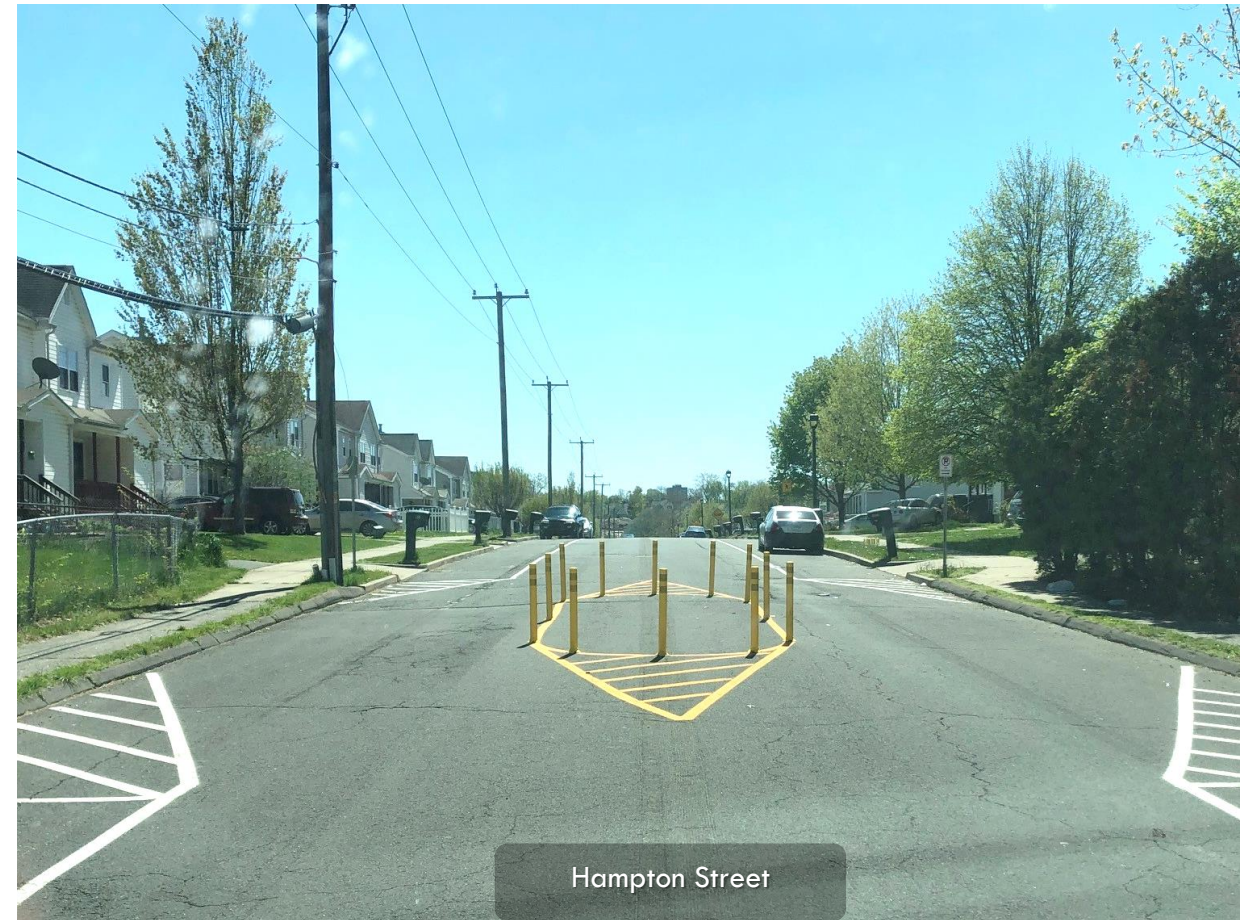
Treatment Types

Sharrows and Edgelines



Hampton Street

Mini Island



Bumpouts



Image Source: Google Maps

Lateral Shift w/ Alternating Parking



Image Source: Google Maps

Contact Us

Email:

SafeStreets@Hartford.gov

Phone: 860-757-9222