



CITY OF HARTFORD – Updated 4/19/24

HILLSIDE AVE TRAFFIC CALMING

Traffic Calming Objectives

- Reduce speeds
- Discourage aggressive driving
- Reduce crashes and prevent injuries/fatalities
- Protect vulnerable users such as pedestrians, bicyclists, and other non-vehicular users
- Develop innovative, flexible projects for quicker deployment, evaluation, and adjustment

Traffic calming has been implemented in other Hartford neighborhoods. On Hampton St, southbound speeding was reduced by nearly half. On Wethersfield Ave, there was a reduction in severe and fatal crashes. For the Rawson School pilot, stop compliance improved from 58% to 84%.

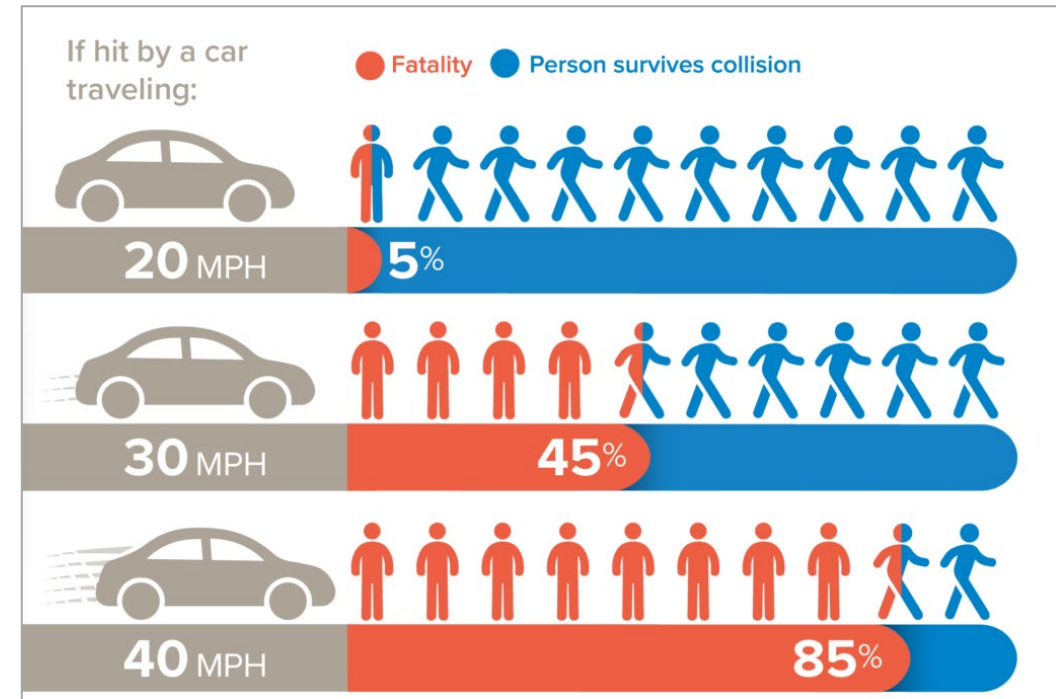
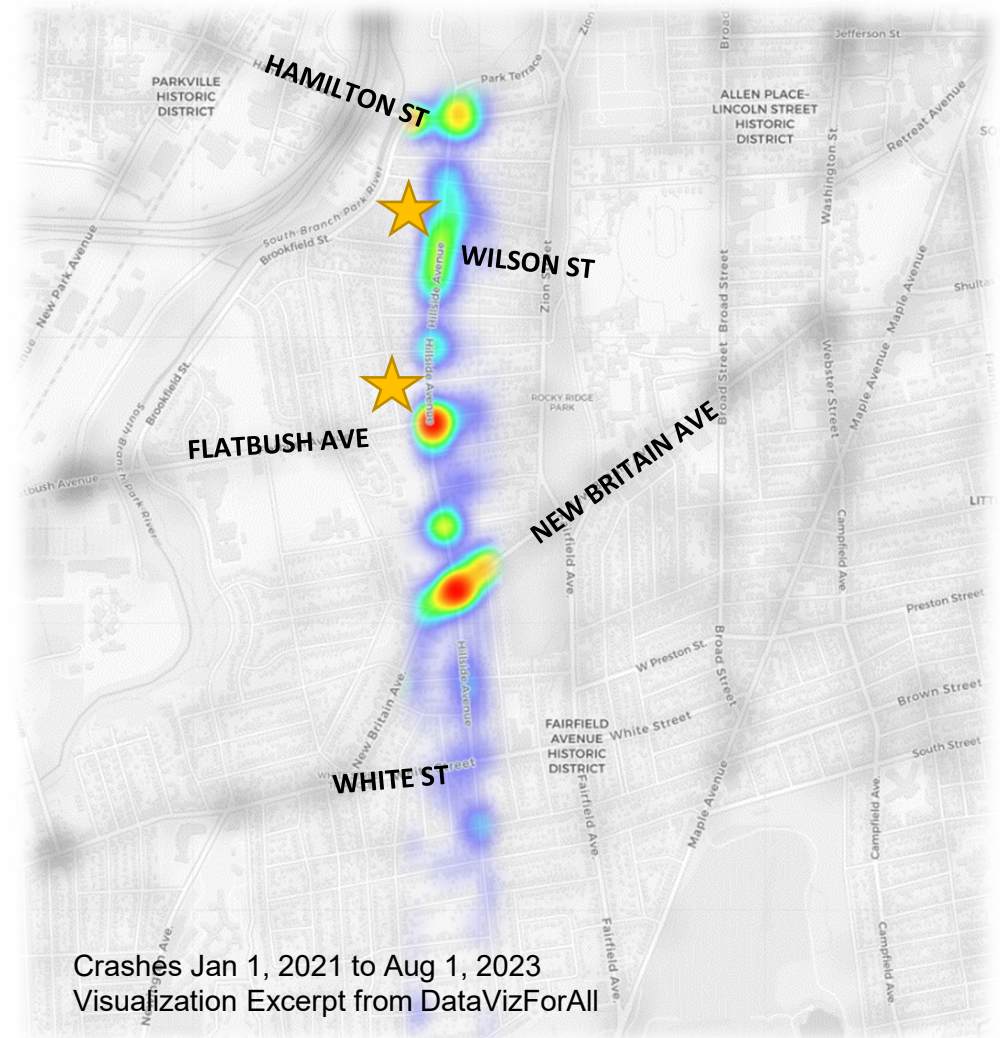


Image Source: Smart Growth America
(<https://smartgrowthamerica.org/why-safety-and-speed-are-fundamentally-incompatible-a-visual-guide/>)



Existing Conditions

- About 4,700 vehicles/day (2021)
 - Posted Speed Limit: 30 MPH
 - Average Speed: 23 MPH
 - Peak Recorded Speed: 66-70 MPH
- Institutions and Amenities:
 - ★ **Moylan Elementary and McDonough Middle Schools**
 - Pope Park
- Existing Street Parking
- Bus Route 63
- Partial Existing Sharrows





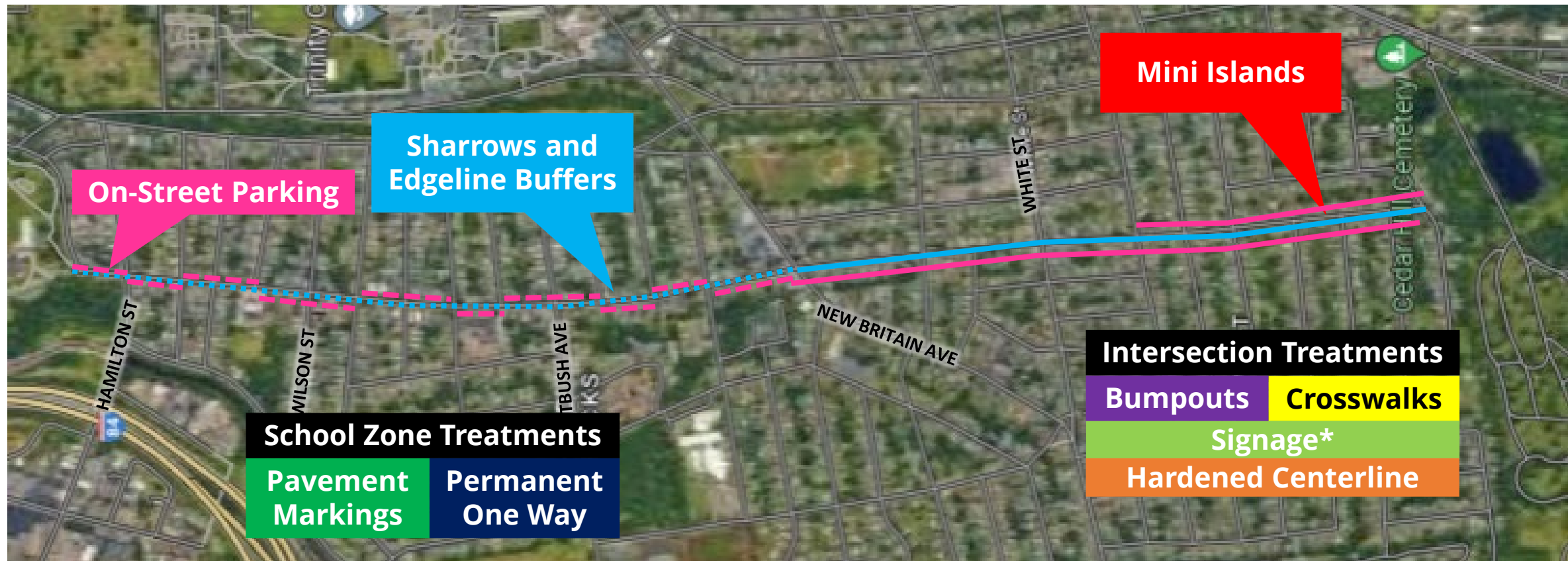
Hillside Avenue

The following slides are for general illustrative purposes and may be subject to change.



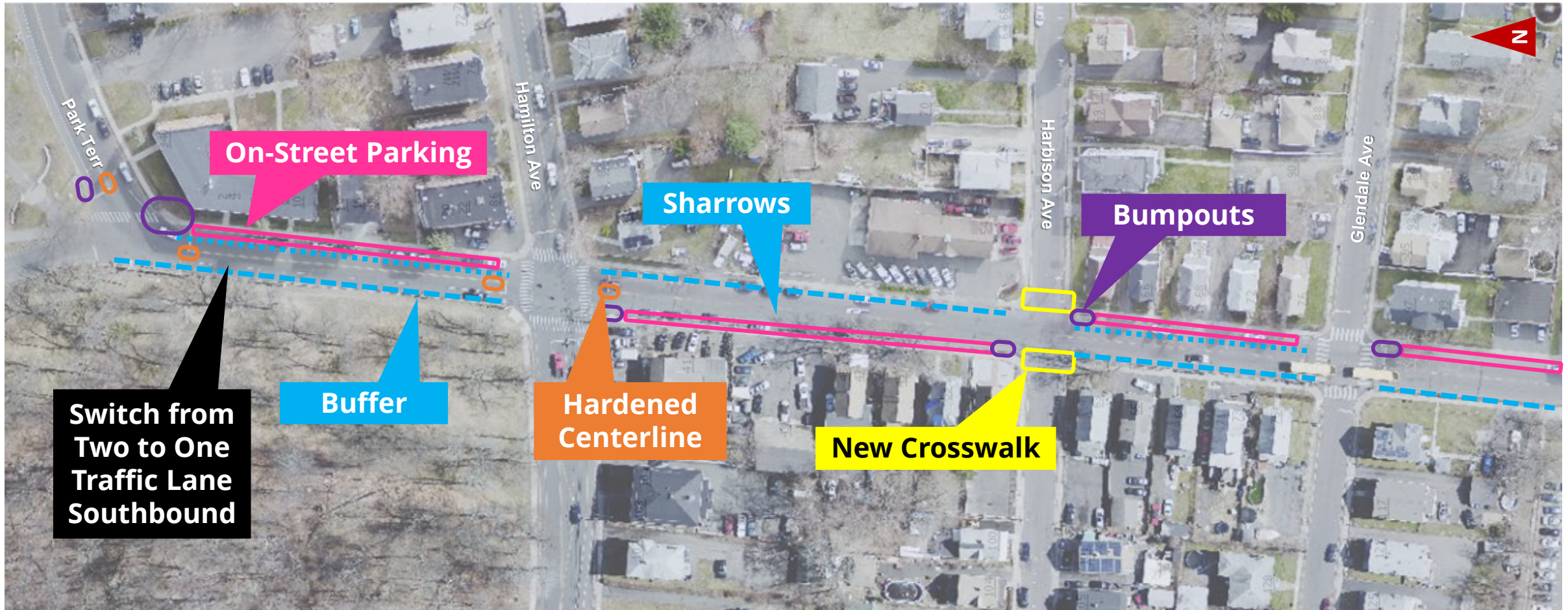
Overview of Treatments

Below is a general overview of treatments along the Hillside Ave corridor.

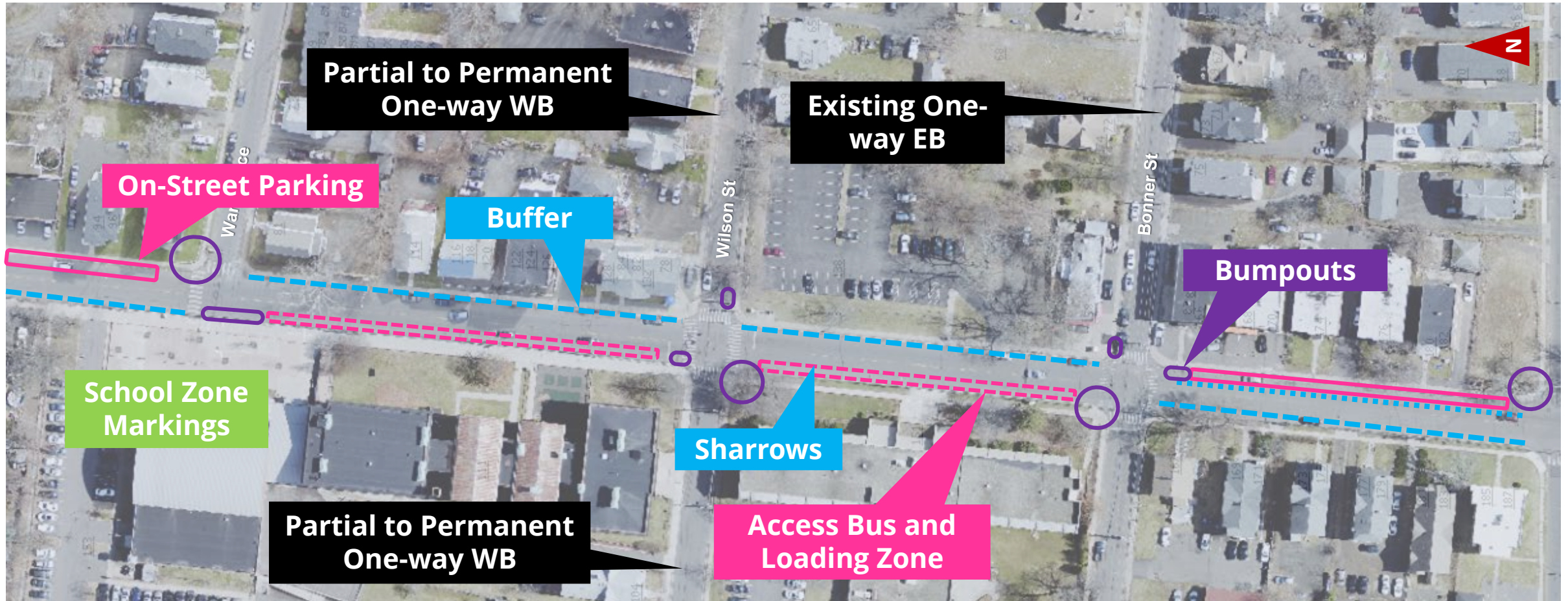


*New / Refreshed signage will vary by location and shall correspond with applicable treatments.

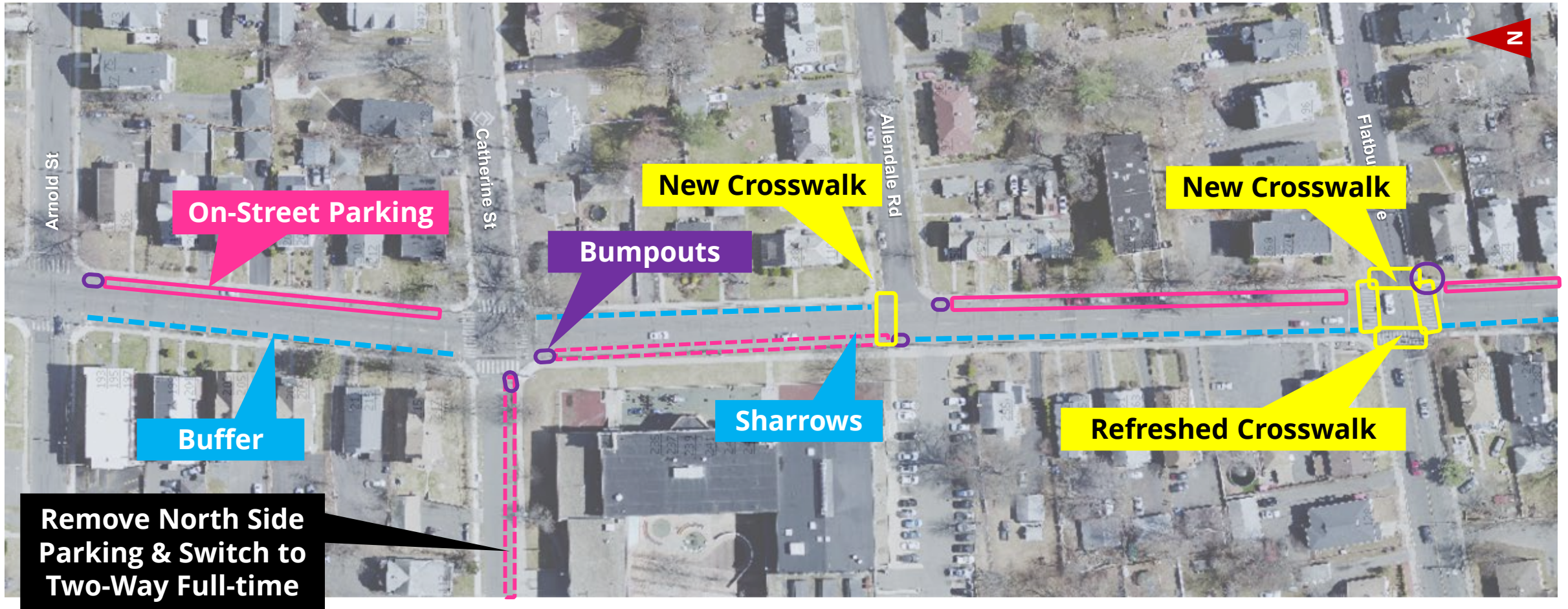
Park Terrace to Glendale Ave



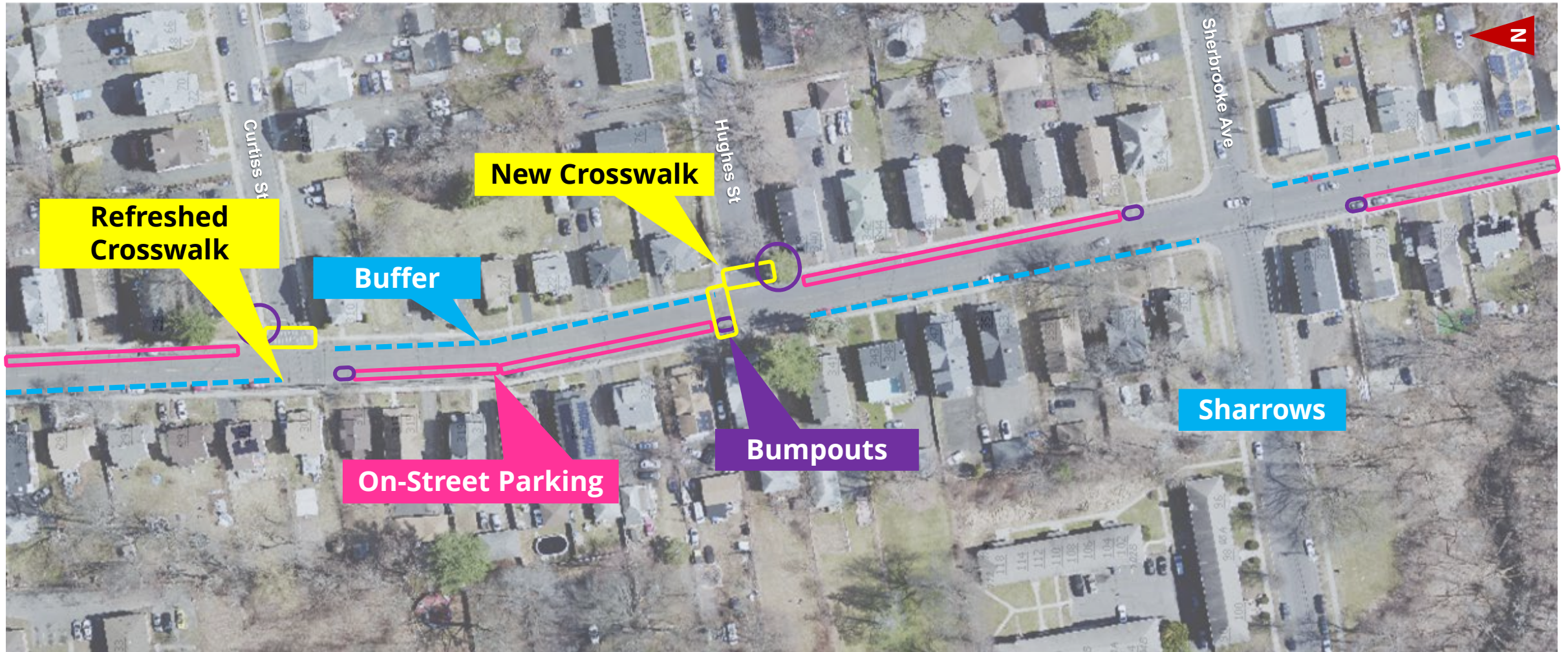
Ward Place to Arnold Street



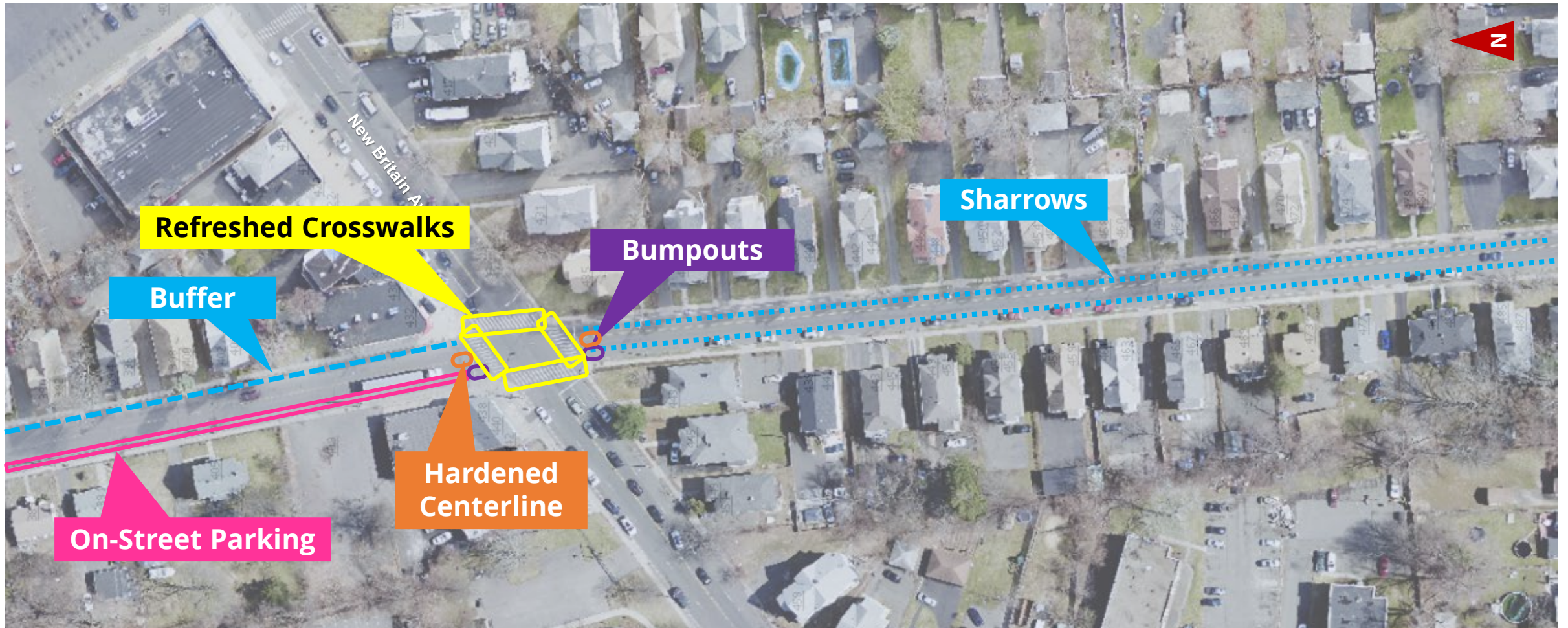
Arnold Street to Flatbush Ave



Curtiss Street to Sherbrooke Ave



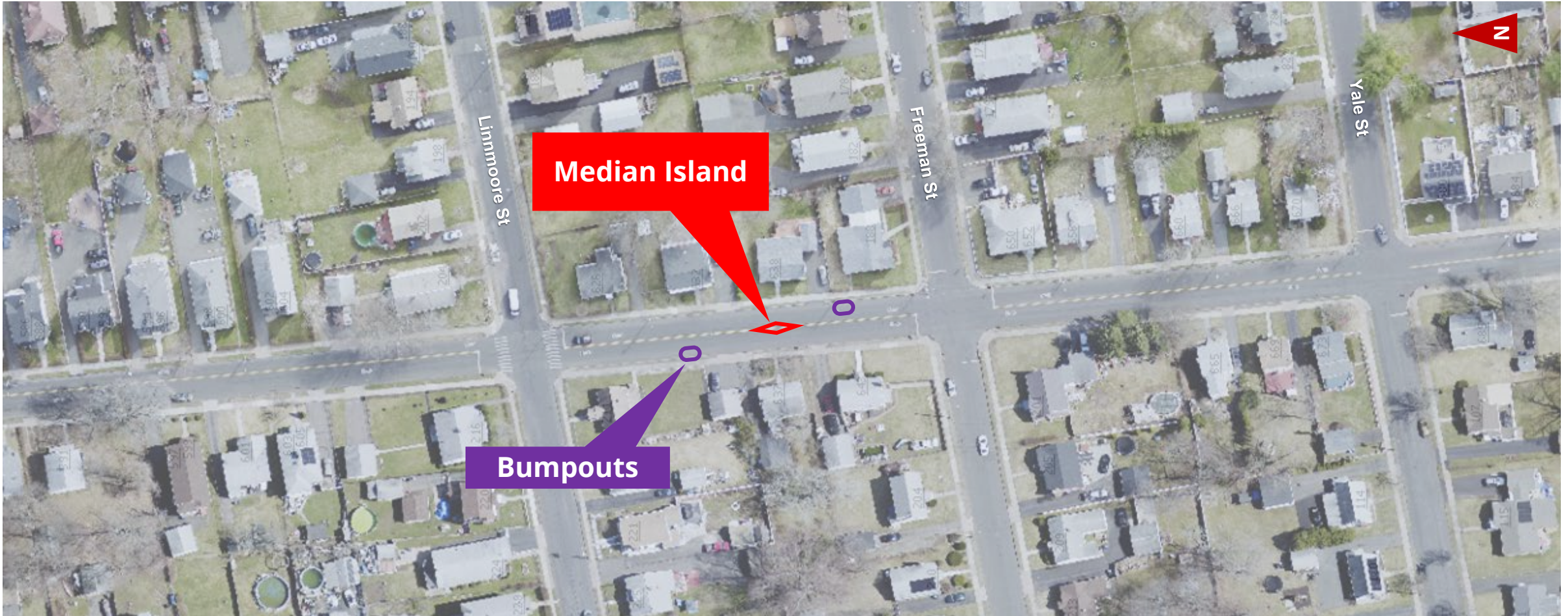
New Britain Ave to Ansonia Street



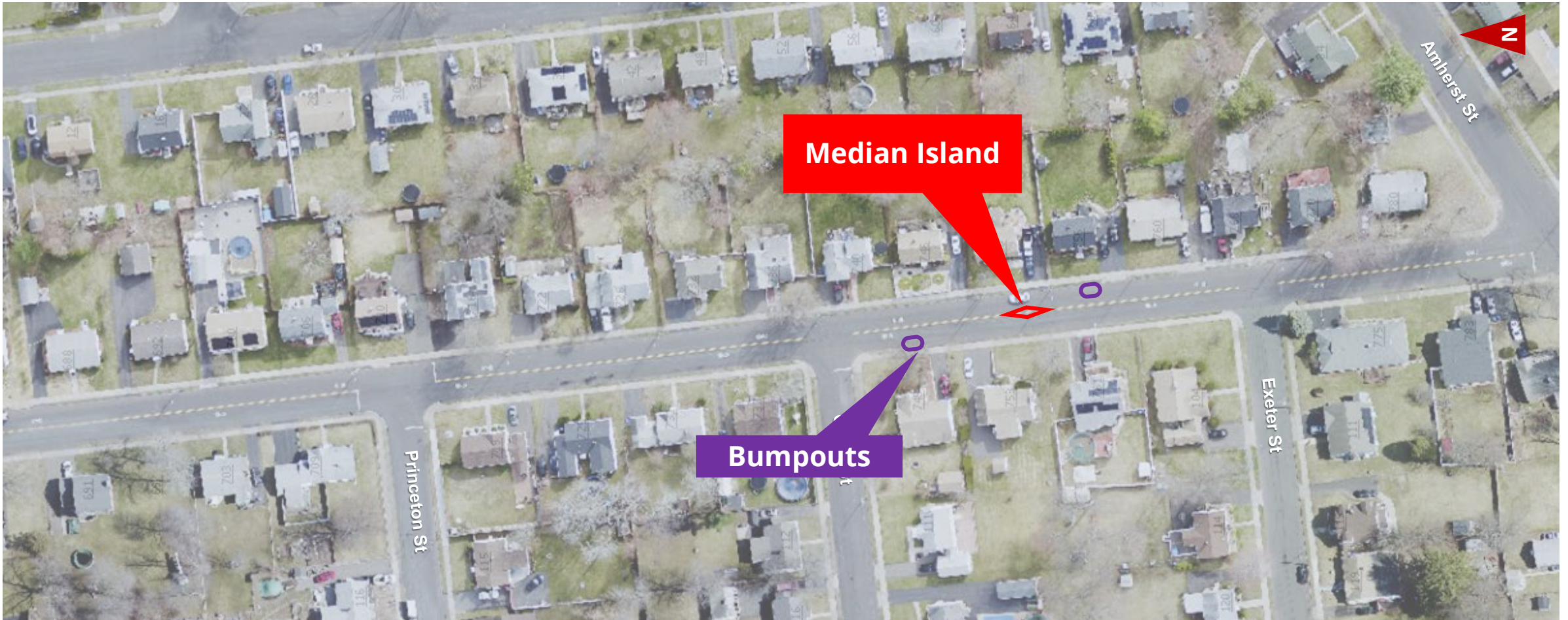
Ansonia Street to White Street



White Street to Yale Street



Yale Street to Amherst Street



Treatment Types

Sharrows and Edgelines



Hampton Street

Lateral Shift w/ Alternating Parking



Image Source: Google Maps

Mini Island



Cornwall Street

Image Source: FHI Studio



Rawson Elementary Pilot

Image Source: FHI Studio

Bumpouts / Curb Extensions

INTERIM TREATMENT OPTION



Rawson Elementary Pilot

Image Source: FHI Studio

FUTURE PERMANENT OPTION



Tower Avenue

Image Source: Google Maps

Hardened Centerline



Blue Hills Pilot

Image Source: FHI Studio

Contact Us

Email:

SafeStreets@Hartford.gov

Phone: 860-757-9222