

West End Neighborhood Traffic Calming Workshop

August 9, 2023





Introductions

- Grace Yi – City of Hartford – Senior Planner
- Sebastian Tata – City of Hartford – Department of Public Works
- Kenny Gonzalez – Hartford Parking Authority
- Jill Turlo – Hartford Parking Authority
- Parker Sorenson, PE – FHI Studio – Traffic Engineer
- Joe McDonnell – FHI Studio – Consultant Project Manager

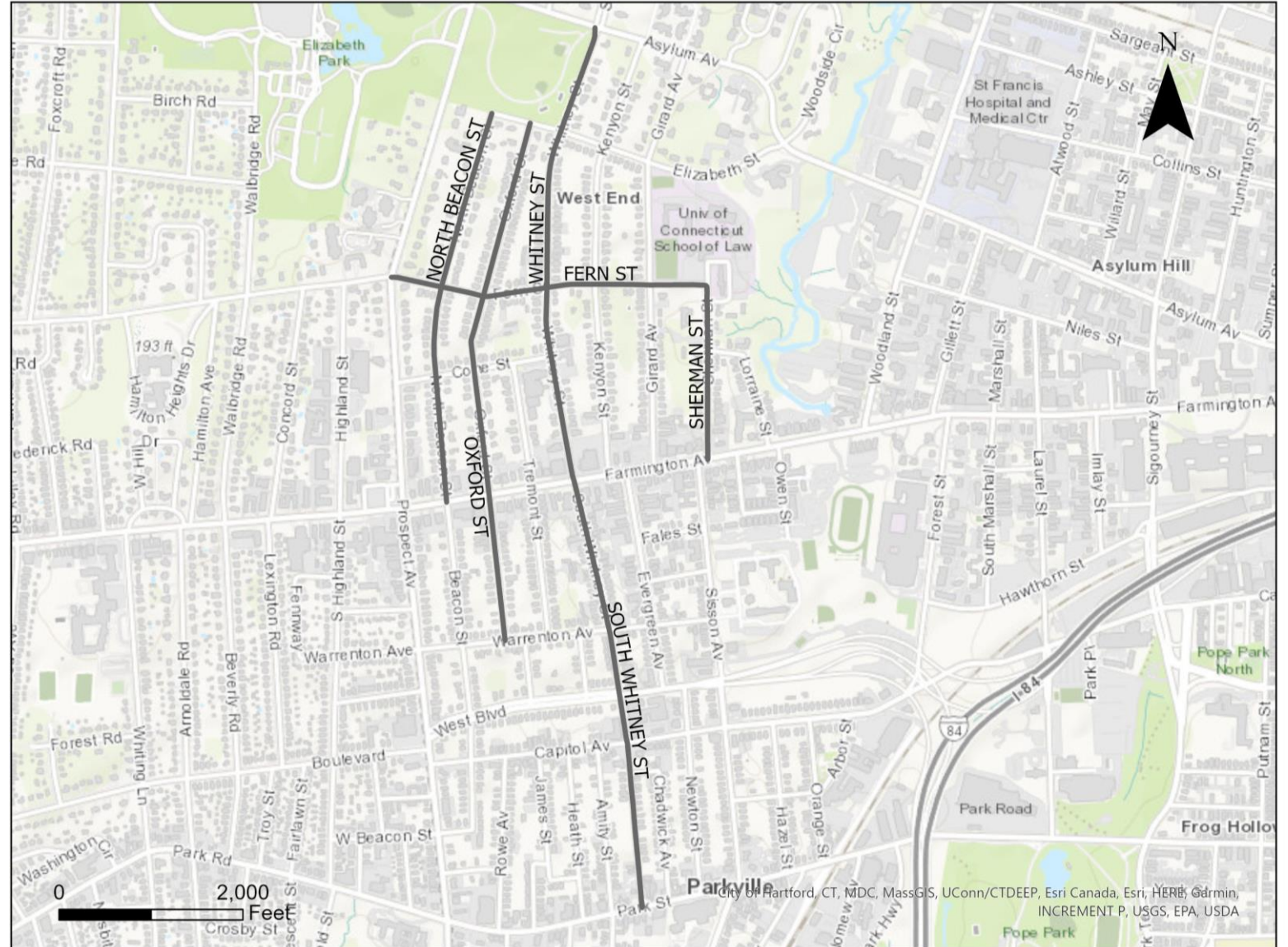


Today's Agenda

- Presentation – 30 minutes
 - Project Overview
 - Project Approach
 - Existing Conditions Review
 - Countermeasure Descriptions
- Interactive Discussion – 45 minutes
- Wrap-up Presentation – 15 mins (regroup at 7:15)

Project Area

- North Beacon Street
- Oxford Street
- Whitney Street
- South Whitney Street
- Fern Street
- Sherman Street





Project Goals

- Safety improvements for ALL users
- Traffic calming (slower vehicle speeds) in neighborhood
- Consider additional bicycle and pedestrian infrastructure where possible, which also helps encourage healthy exercise and recreation



Project Approach

- Quick-build focus (paint, flex posts, signage etc.)
- A look to the future in making quick-build projects permanent (e.g. with curbing)



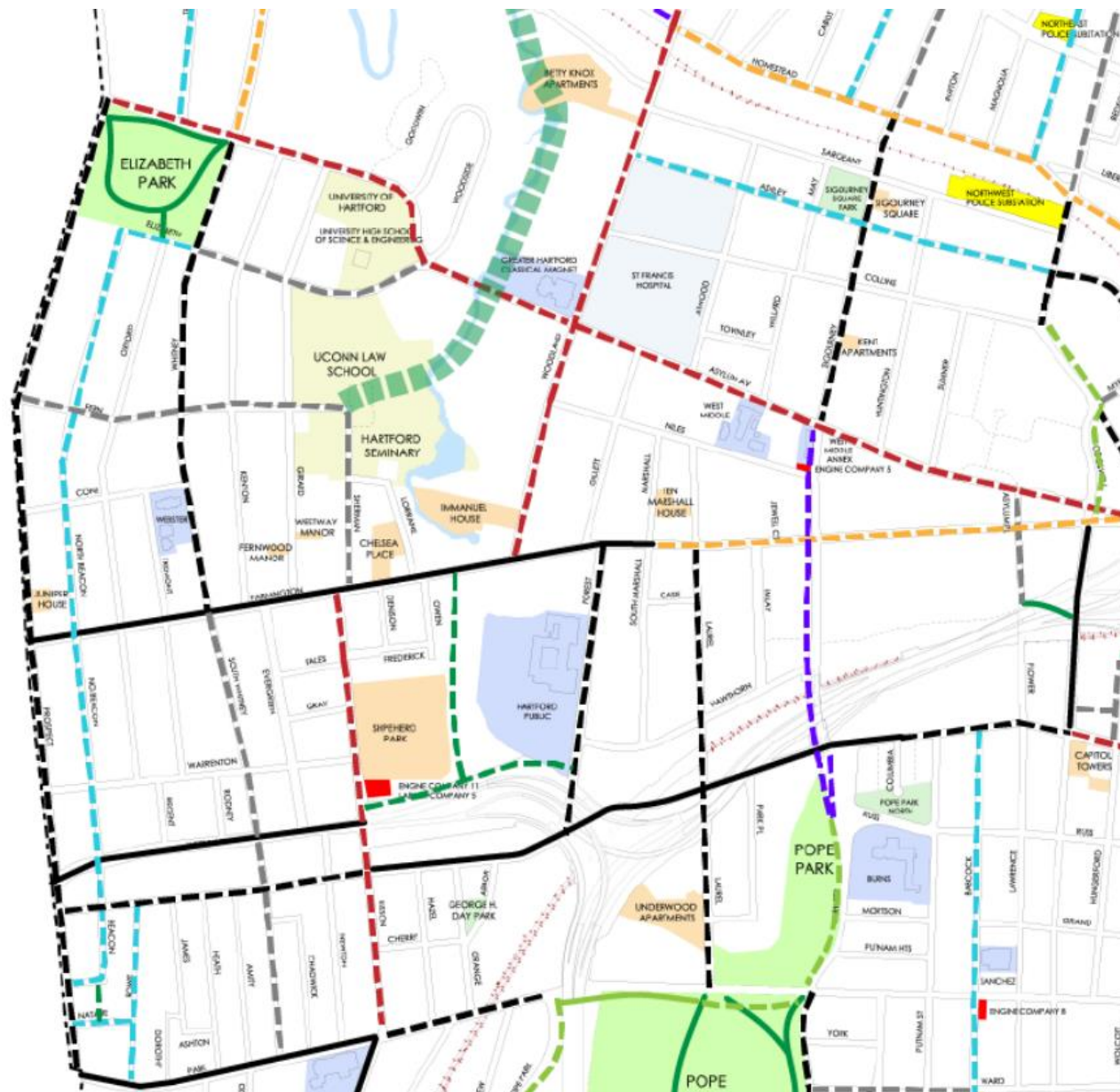
Next Steps After Today's Workshop

- Send your questions and comments to Safestreets@Hartford.gov or 860-757-9222
- Following review of comments, project approach may be revised. Plan sets (the "details") will then be created and posted online



CT Transit Bus Routes

Hartford Bike Plan



- Existing Pathways & Park Circulation
- Existing Sidepath
- Existing Shared Roadway
- Existing Bike Lane
- Proposed Bike Boulevard
- Proposed Shared Roadway
- Proposed Bike Lane
- Proposed Buffered Bike Lane
- Proposed 1-Way Paired Separated Bike Lane
- Proposed 1-Way Separated Bike Lane
- Proposed 2-Way Separated Bike Lane
- Proposed Sidepath
- Proposed Shared Use Pathway

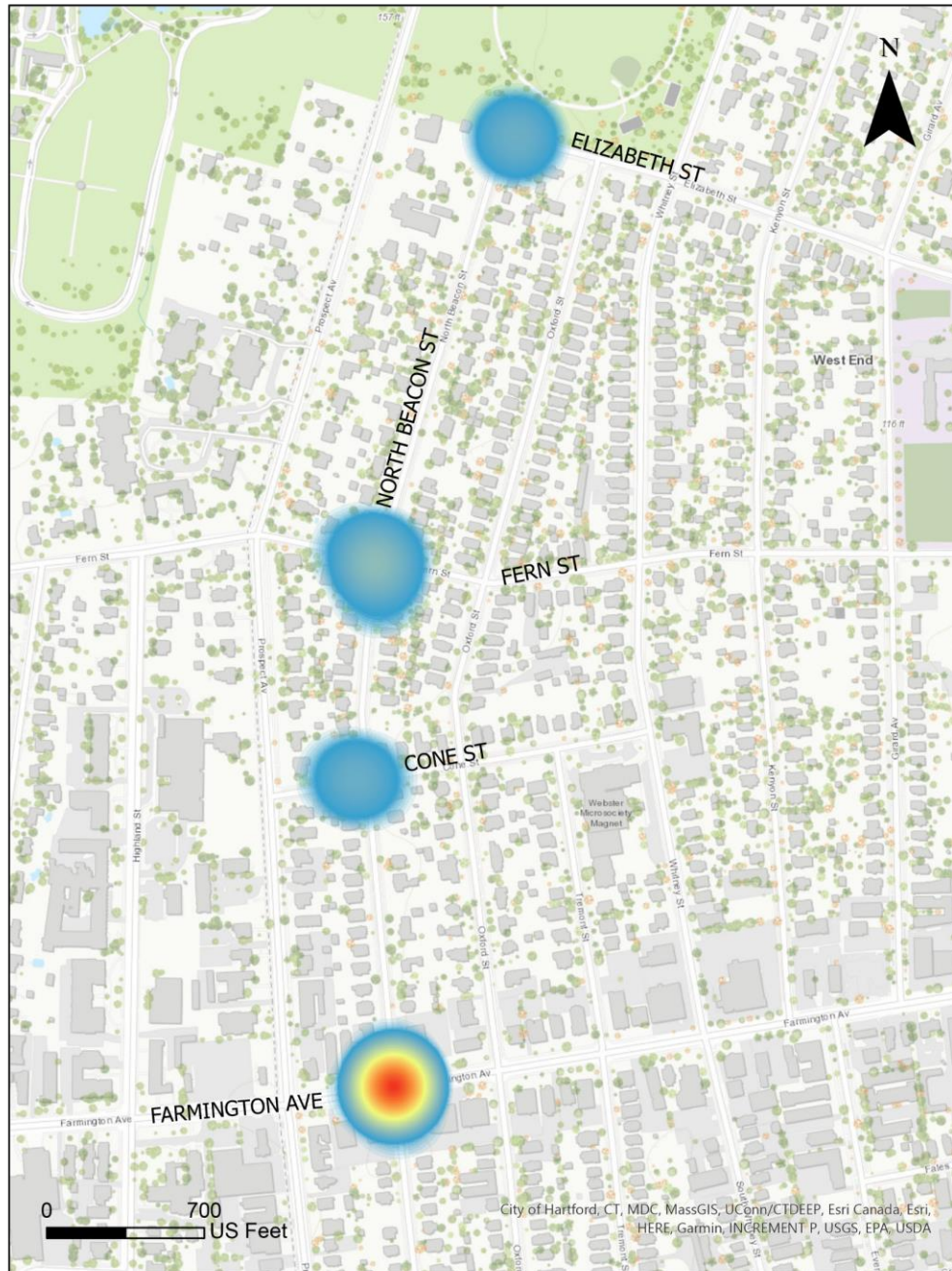


North Beacon

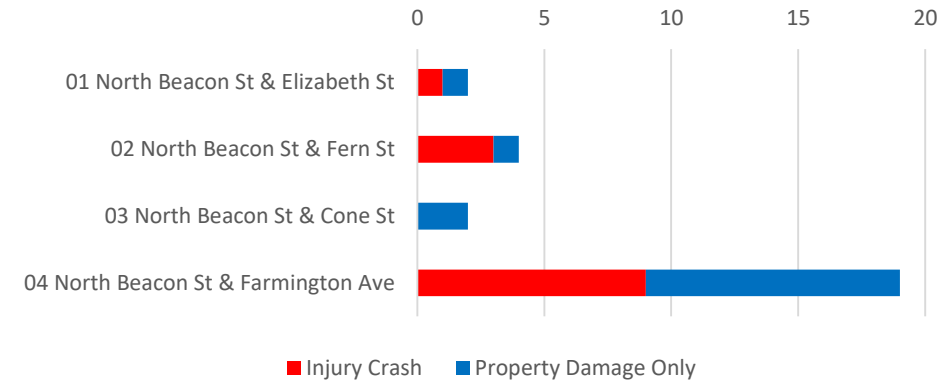
- About 1,100 veh/day
- Elizabeth Street Turn
- Elizabeth Park & Playground
- Existing Speed Bumps
- Note – Prior Work in Area
- 30-feet



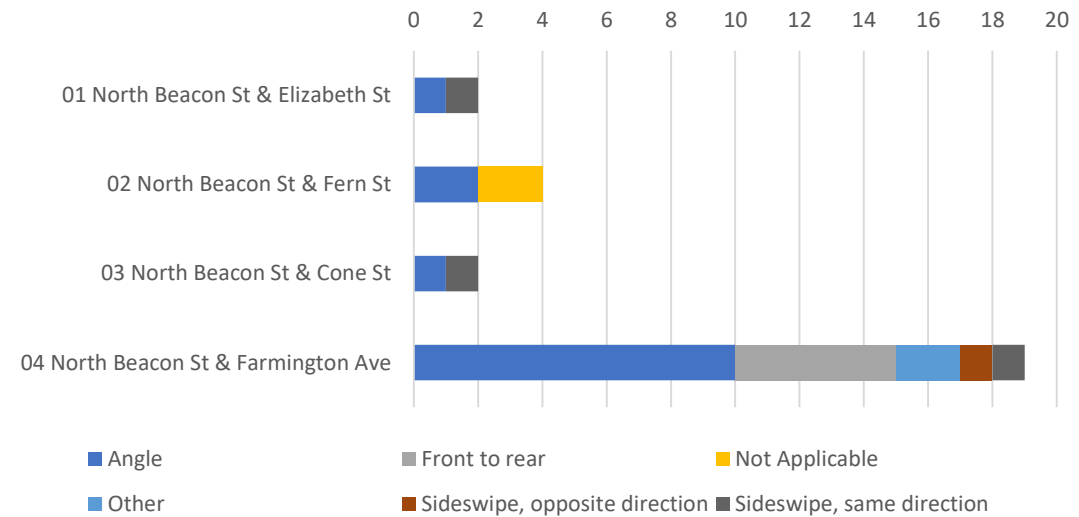
North Beacon Street Corridor



North Beacon Street Crash Type



Injury Crash Type - North Beacon Street Corridor

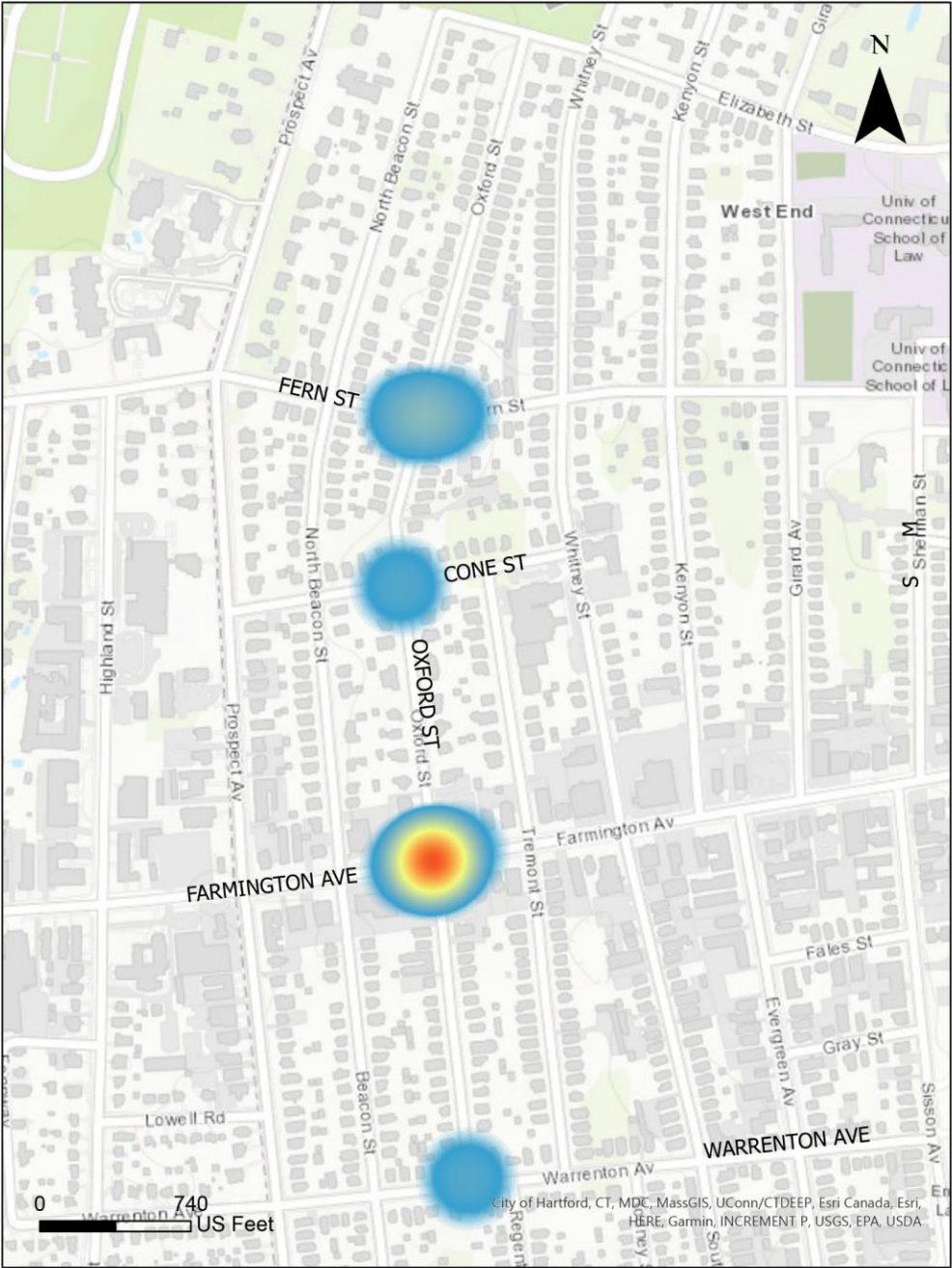




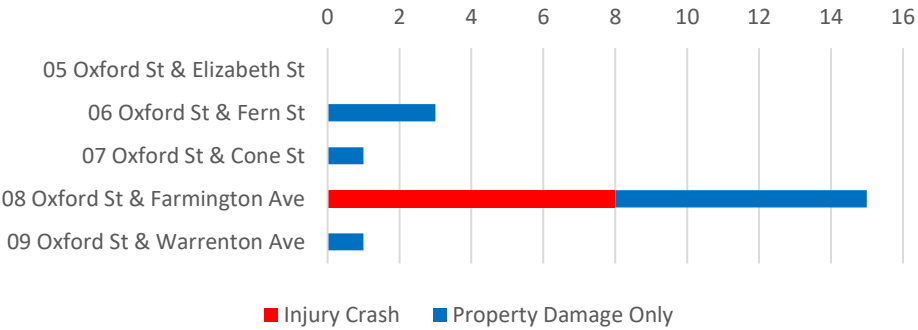
Oxford Street

- Existing Speed Bumps
- Elizabeth Park & Playground
- Curve between Cone Street and Fern Street
- 30-feet

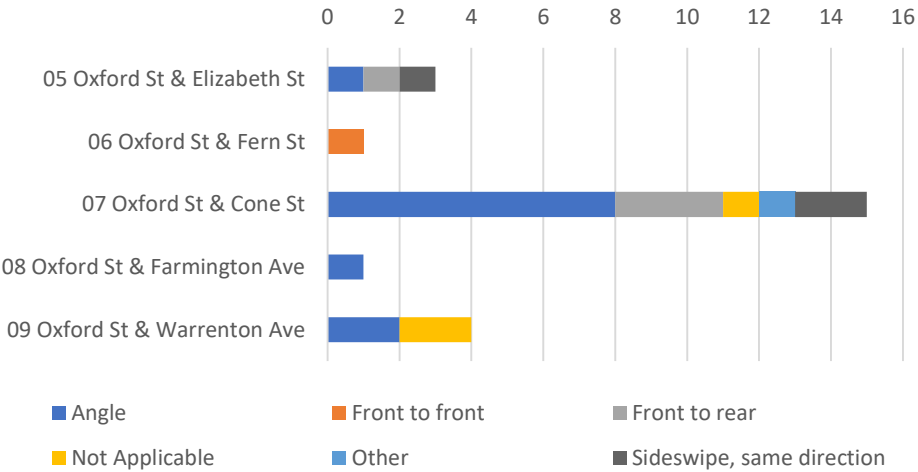




Oxford Street Crash Type



Injury Crash Type - Oxford Street Corridor

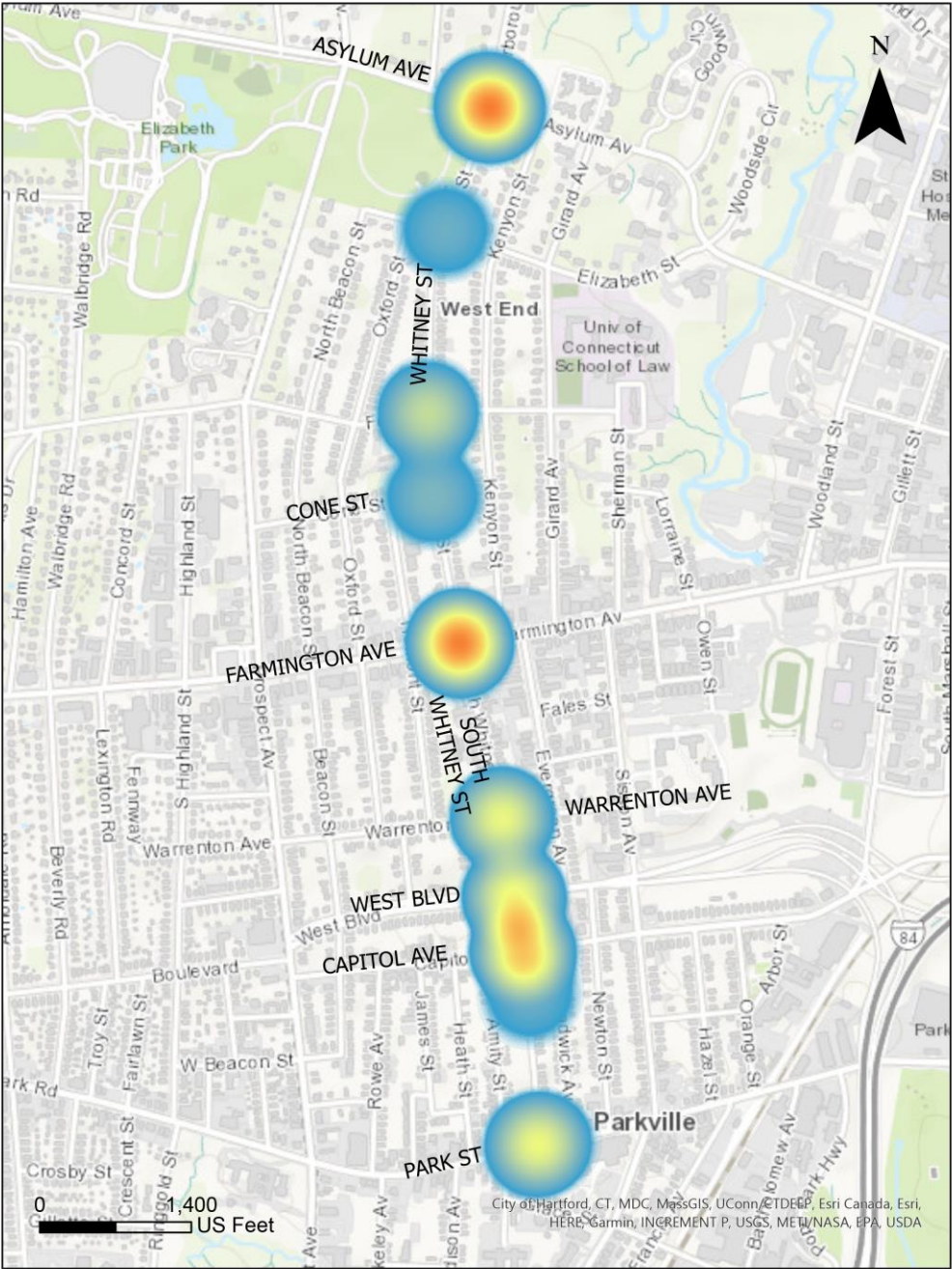




Whitney Street & South Whitney

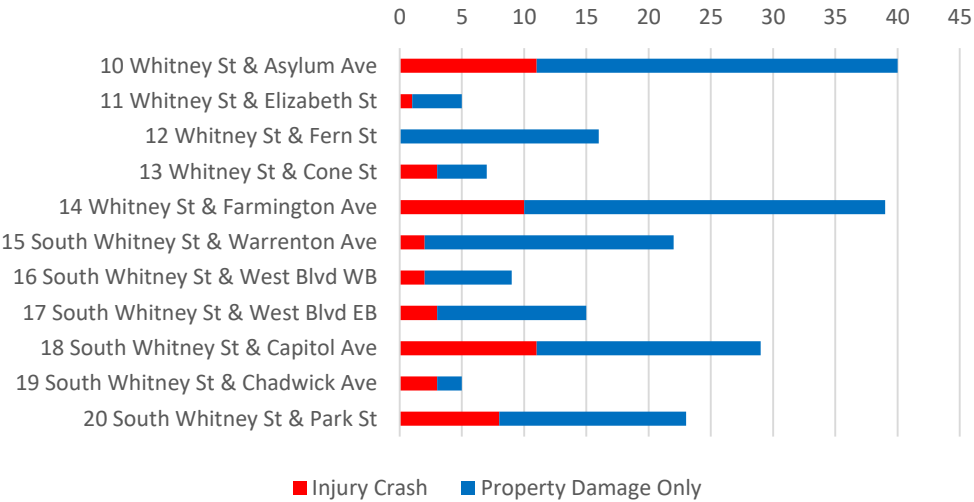
- About 7,200 veh/day (pre-pandemic)
- Noah Webster School
- Elizabeth Park
- Existing Alternating Side Parking with Lateral Shift (Note – observed parking beyond permitted extent)
- Bus Route (Fern to Elizabeth)
- 34-feet (North of Farmington)
- 30-feet (South of Farmington)



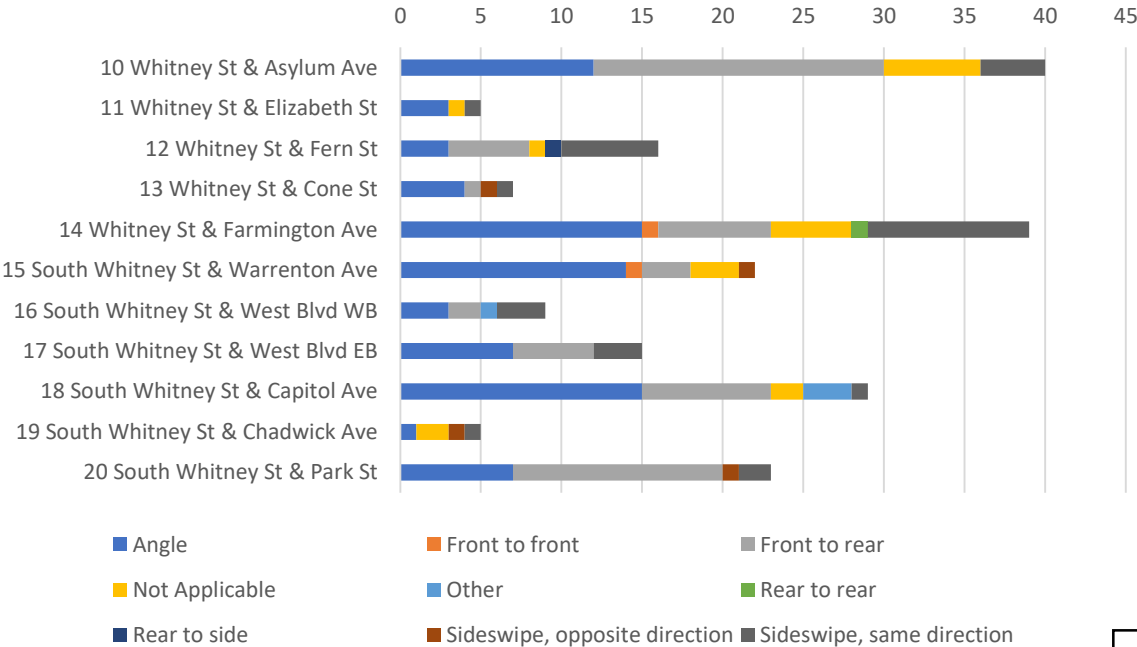


Whitney & South Whitney Street Corridor

Whitney Street Crash Type



Injury Crash Type - Whitney & South Whitney Street Corridor



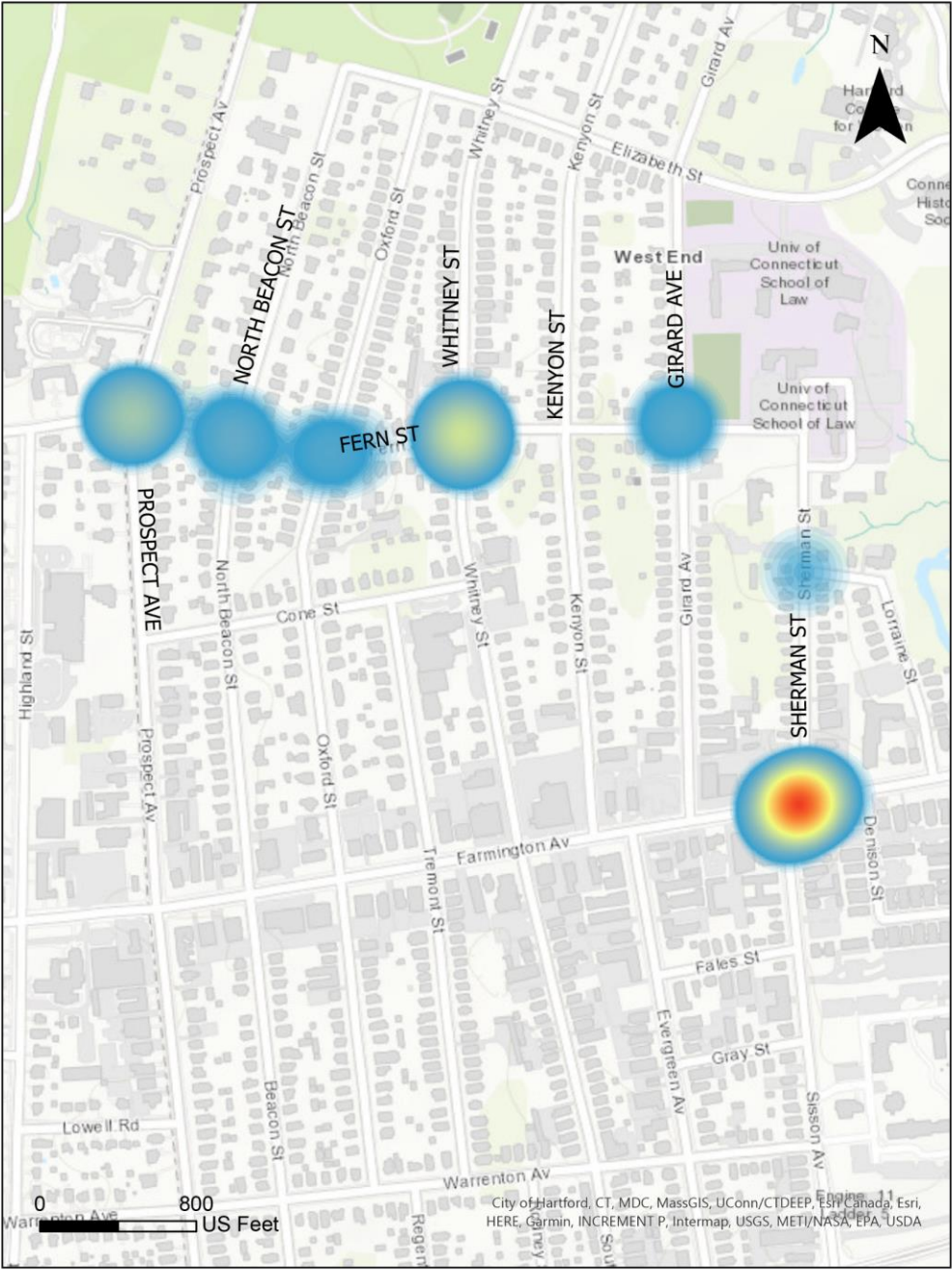


Fern Street & Sherman Street

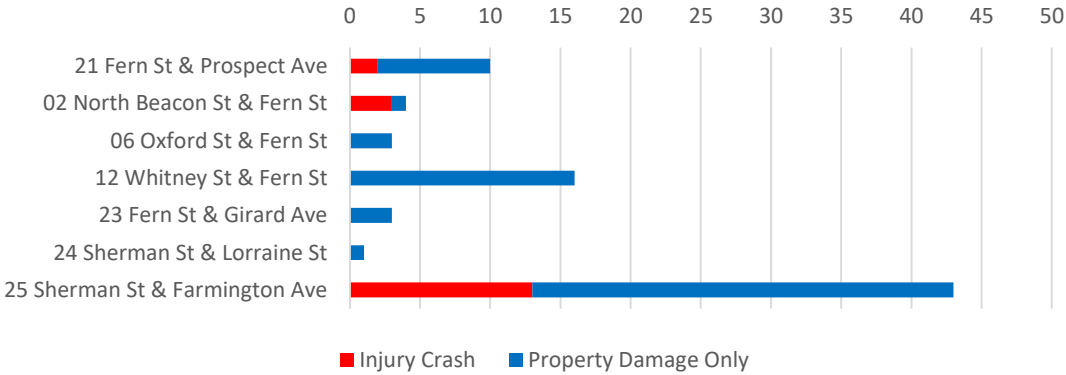
- About 3,600 veh/day near Prospect
- About 2,300 veh/day near Farmington
- UConn Law
- Hartford International University for Religion and Peace
- Existing Speed Bumps on Sherman
- Bus Route (West of Whitney)
- 30-feet



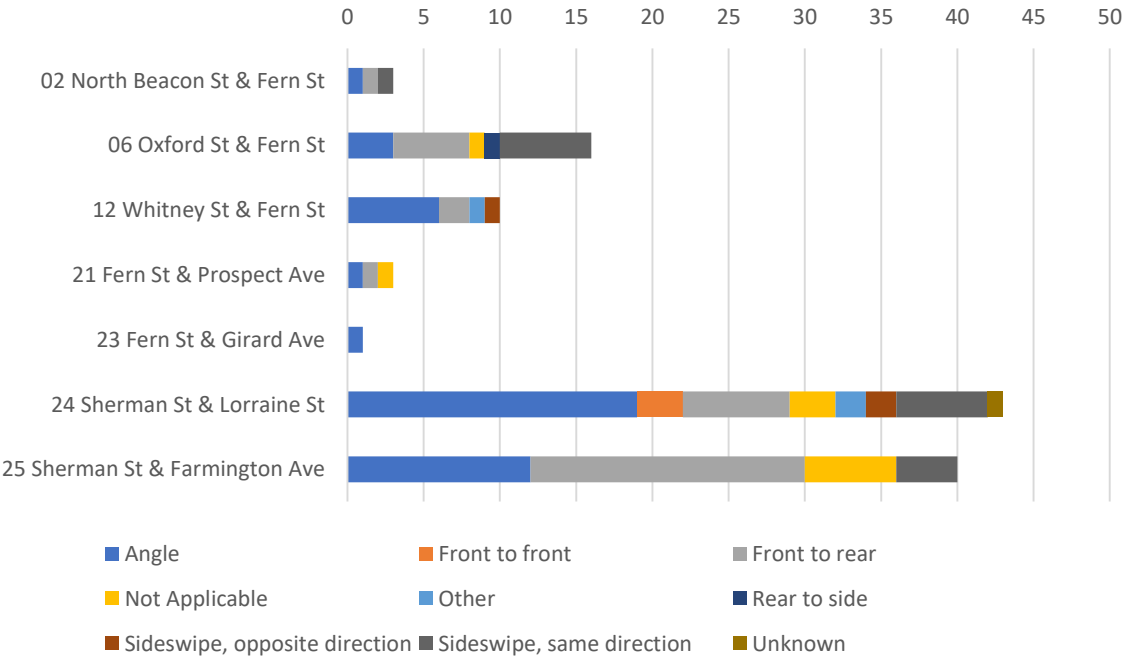
Fern & Sherman Street Corridor

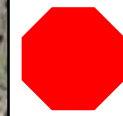
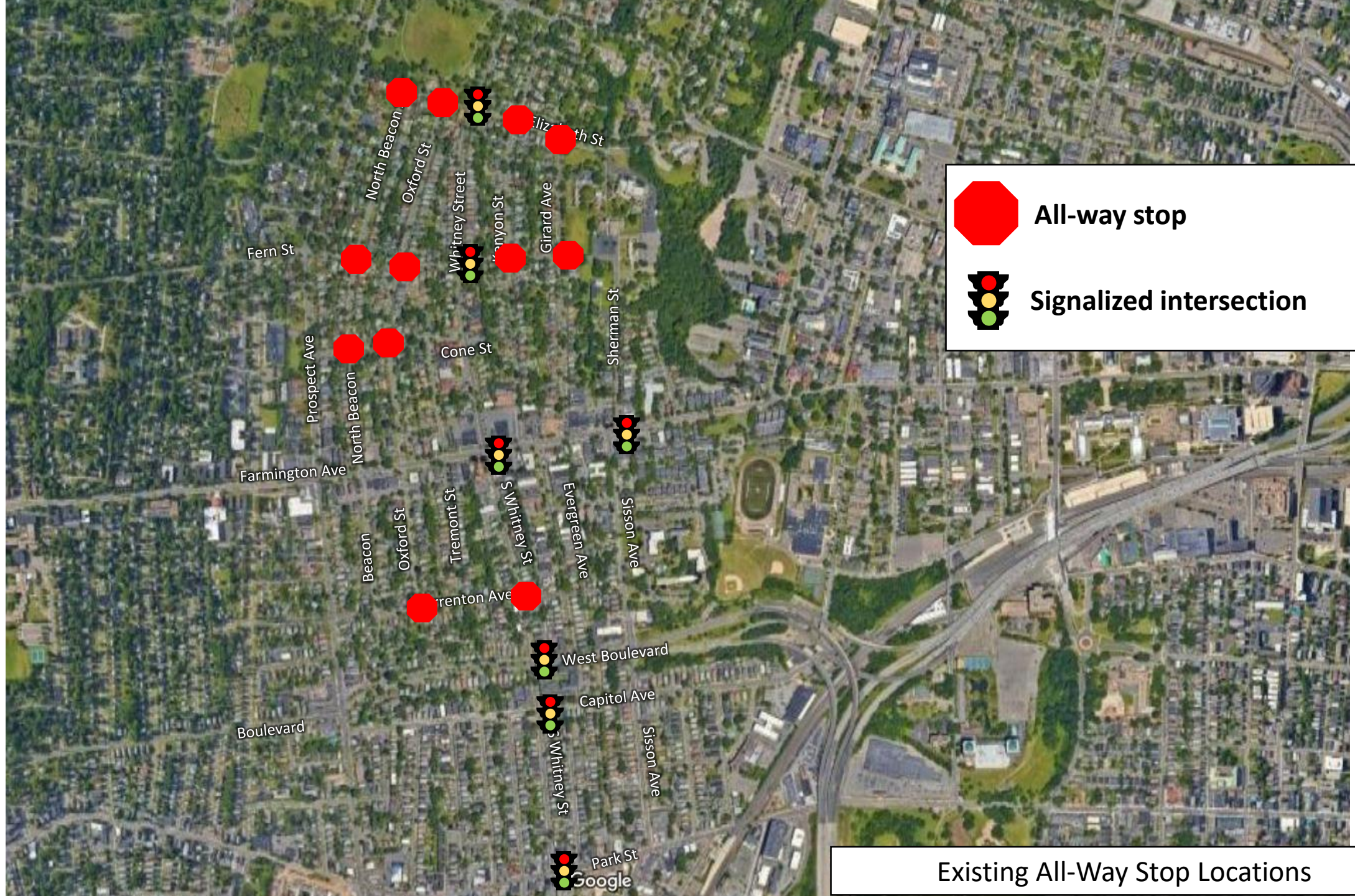


Fern Street & Sherman Street Crash Type



Injury Crash Type - Fern & Sherman Street Corridor



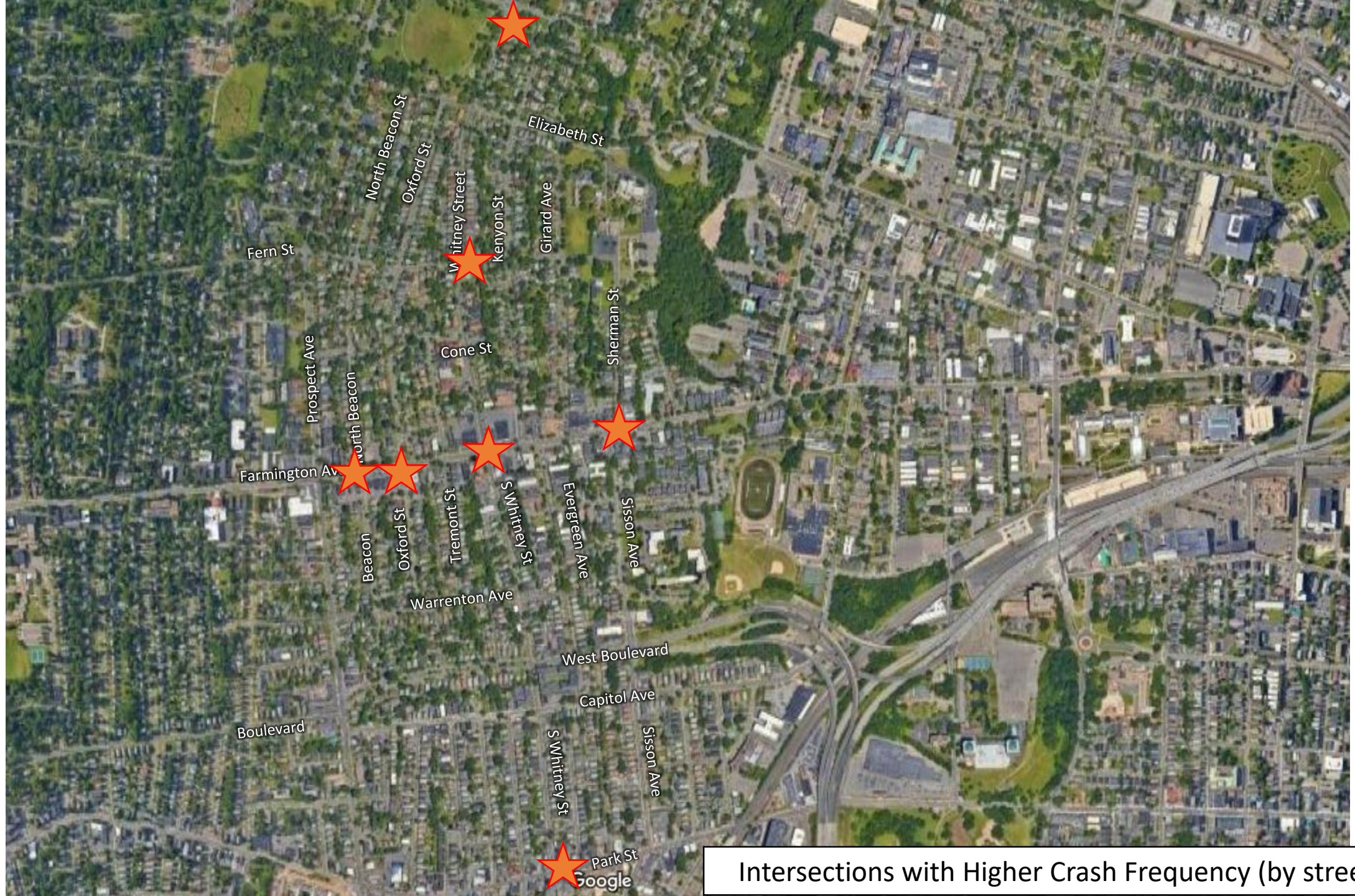


All-way stop



Signaled intersection

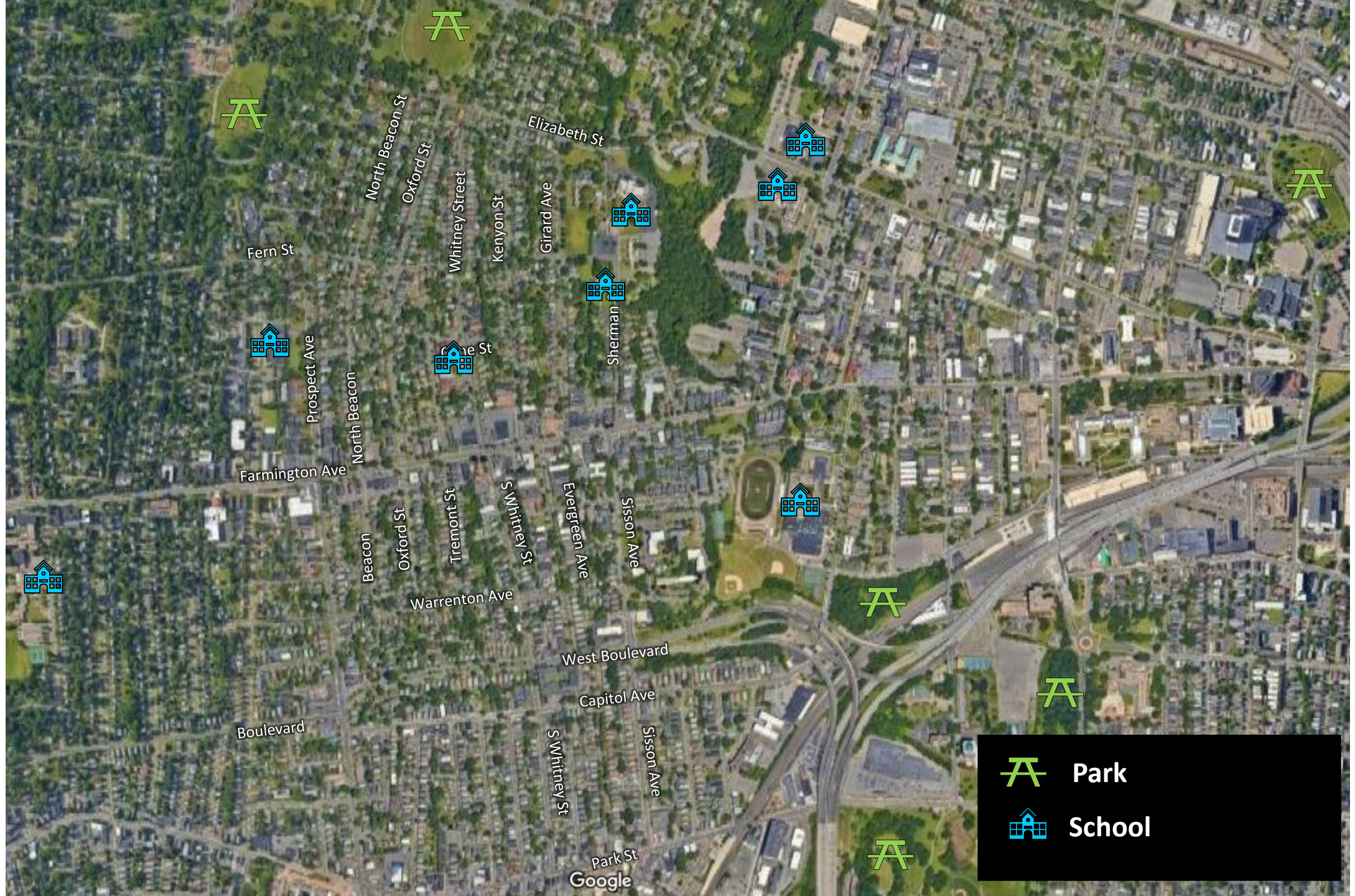
Existing All-Way Stop Locations



Intersections with Higher Crash Frequency (by street)



Side streets with E/W connectivity




Park



School



 All Layers



Example Countermeasures

Example Countermeasures

For illustrative purposes. Locations are approximate, and sizes are not to scale.



All-way Stop

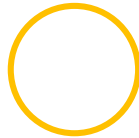
Mini Island

Lateral Shift

Bike Sharrows



Hardened
Centerline



Mini Roundabout

Pinch Point

Bike Lane



Narrow
Edgelines

Bumpouts



Yield Point

Buffered Bike Lane

Hardened Centerline

For illustrative purposes. Locations are approximate, and sizes are not to scale.



All-way Stop



Hardened
Centerline



Narrow
Edgelines

Mini Island



Mini Roundabout

Bumpouts

Lateral Shift

Pinch Point

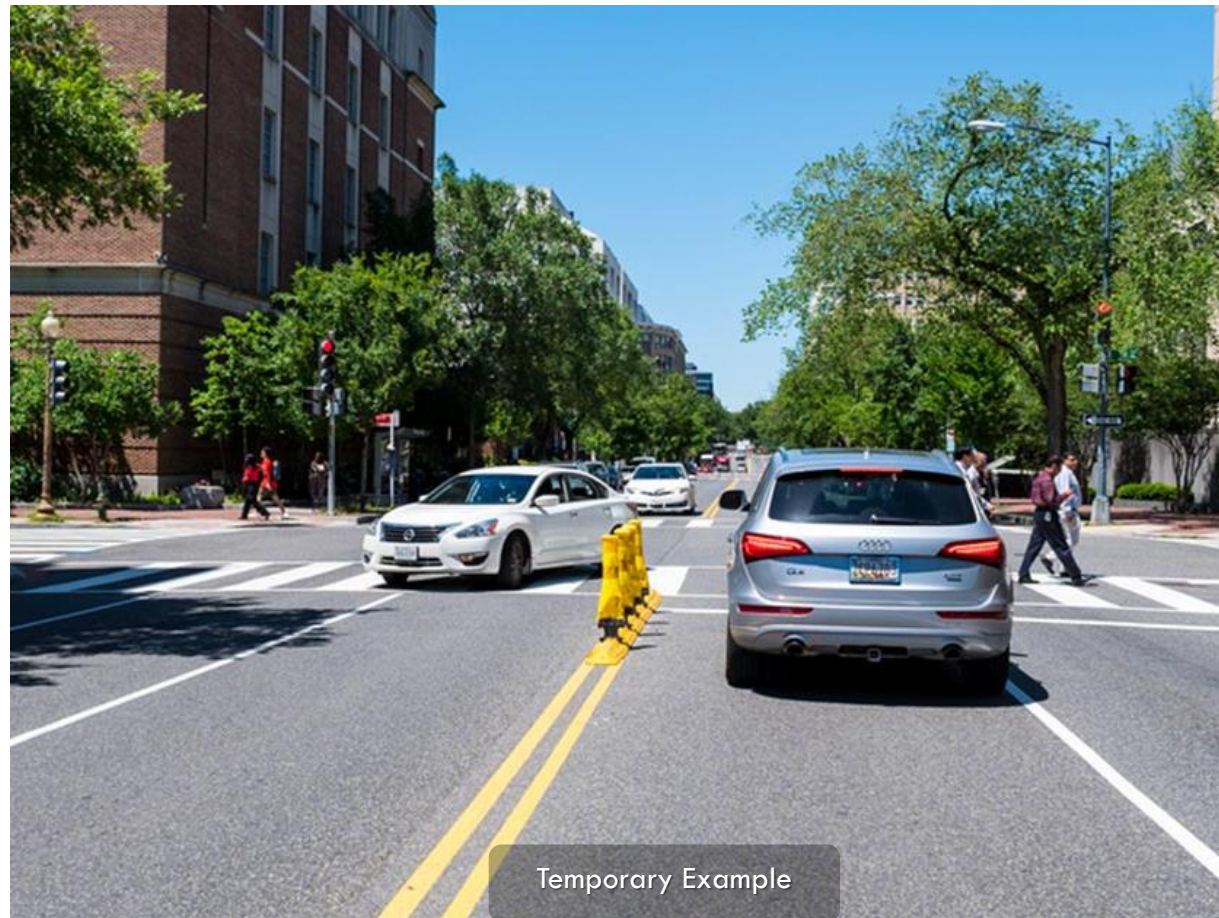


Yield Point

Bike Sharrows

Bike Lane

Buffered Bike
Lane



Narrow Edgelines

For illustrative purposes. Locations are approximate, and sizes are not to scale.



All-way Stop



Hardened
Centerline



Narrow
Edgelines

Mini Island



Mini Roundabout

Bumpouts

Lateral Shift

Pinch Point



Yield Point

Bike Sharrows

Bike Lane

Buffered Bike
Lane



Hampton Street

Mini Island

For illustrative purposes. Locations are approximate, and sizes are not to scale.



All-way Stop



Mini Island



Lateral Shift



Bike Sharrows



Hardened
Centerline



Mini Roundabout



Pinch Point



Bike Lane



Narrow
Edgelines



Bumpouts



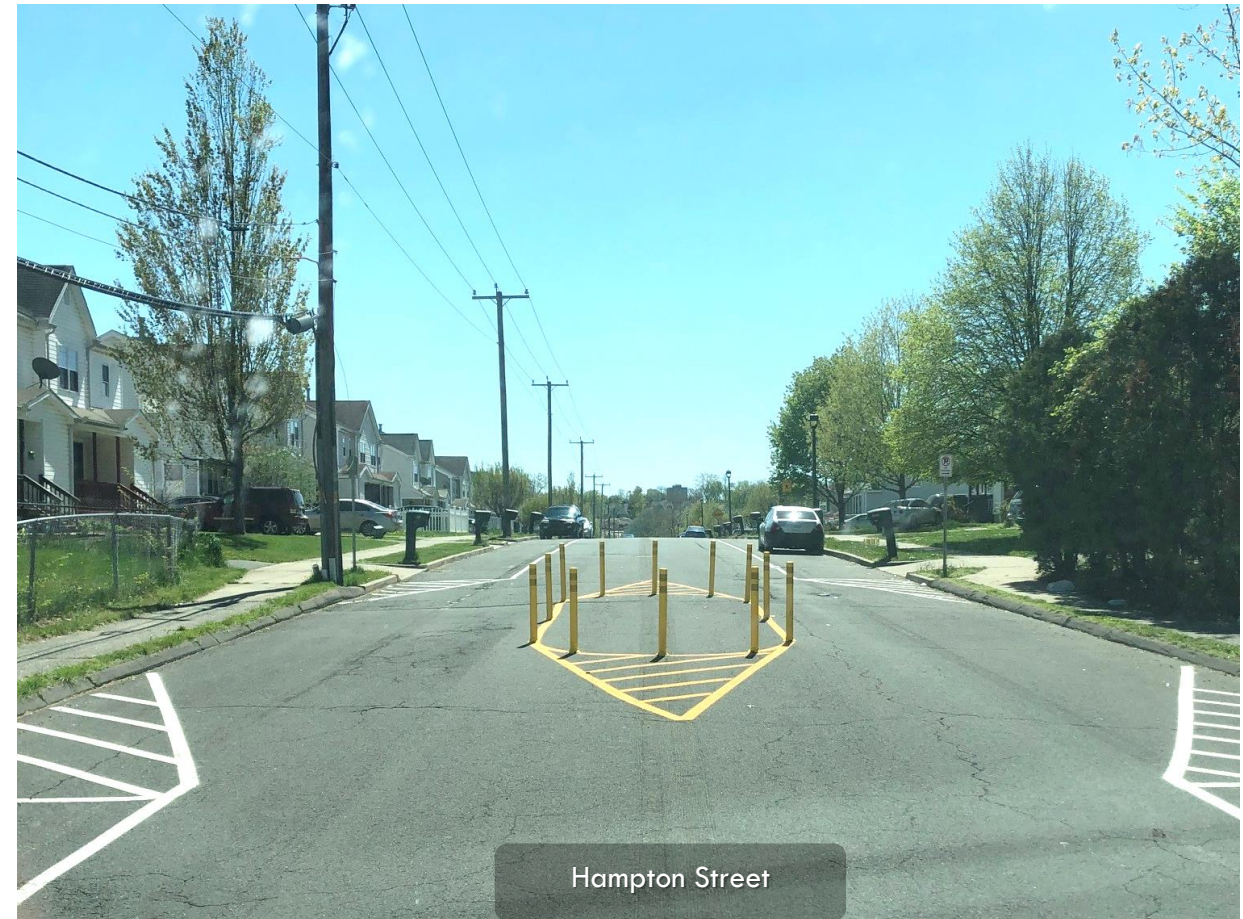
Yield Point



Buffered Bike Lane



Cornwall Street



Hampton Street

Mini Roundabout

For illustrative purposes. Locations are approximate, and sizes are not to scale.



All-way Stop



Hardened
Centerline



Narrow
Edgelines



Mini Island



Mini Roundabout



Lateral Shift



Pinch Point



Yield Point



Bike Sharrows



Bike Lane



Buffered Bike Lane



Example Temporary Solution



Example Permanent Solution

Bumpouts

For illustrative purposes. Locations are approximate, and sizes are not to scale.



All-way Stop

Mini Island

Lateral Shift

Bike Sharrows



Hardened
Centerline



Mini Roundabout

Pinch Point

Bike Lane



Narrow
Edgelines

Bumpouts



Yield Point

Buffered Bike
Lane



Lateral Shift

For illustrative purposes. Locations are approximate, and sizes are not to scale.



All-way Stop

Mini Island

Lateral Shift

Bike Sharrows



Hardened
Centerline



Mini Roundabout

Pinch Point

Bike Lane



Narrow
Edgelines

Bumpouts



Yield Point

Buffered Bike
Lane

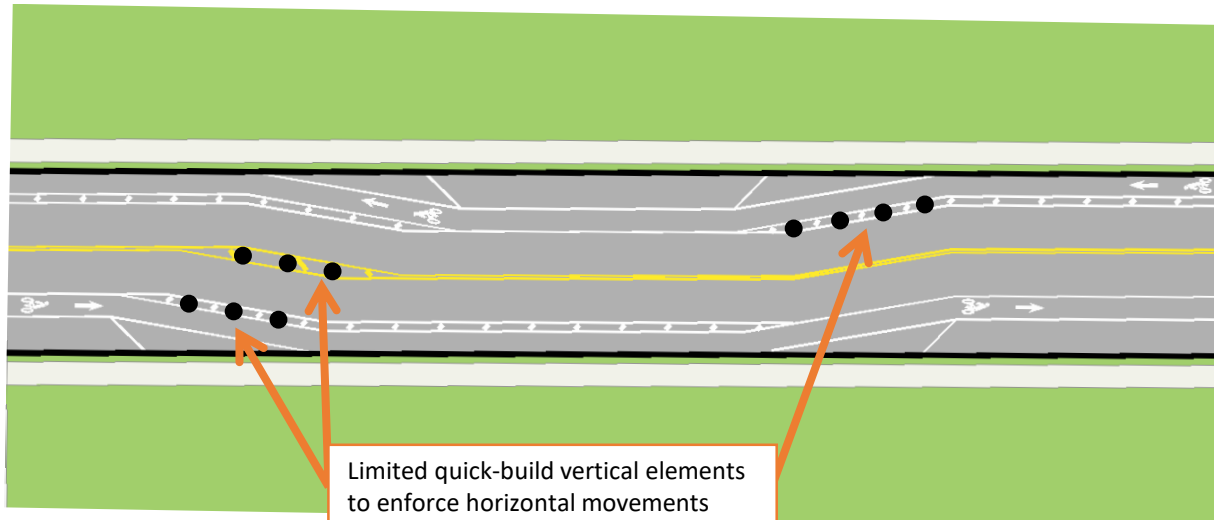


Diagram Example with Vertical Elements to Enforce Shift



Pinch Point

For illustrative purposes. Locations are approximate, and sizes are not to scale.



All-way Stop



Hardened
Centerline



Narrow
Edgelines



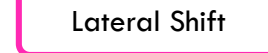
Mini Island



Mini Roundabout



Bumpouts



Lateral Shift



Pinch Point



Yield Point



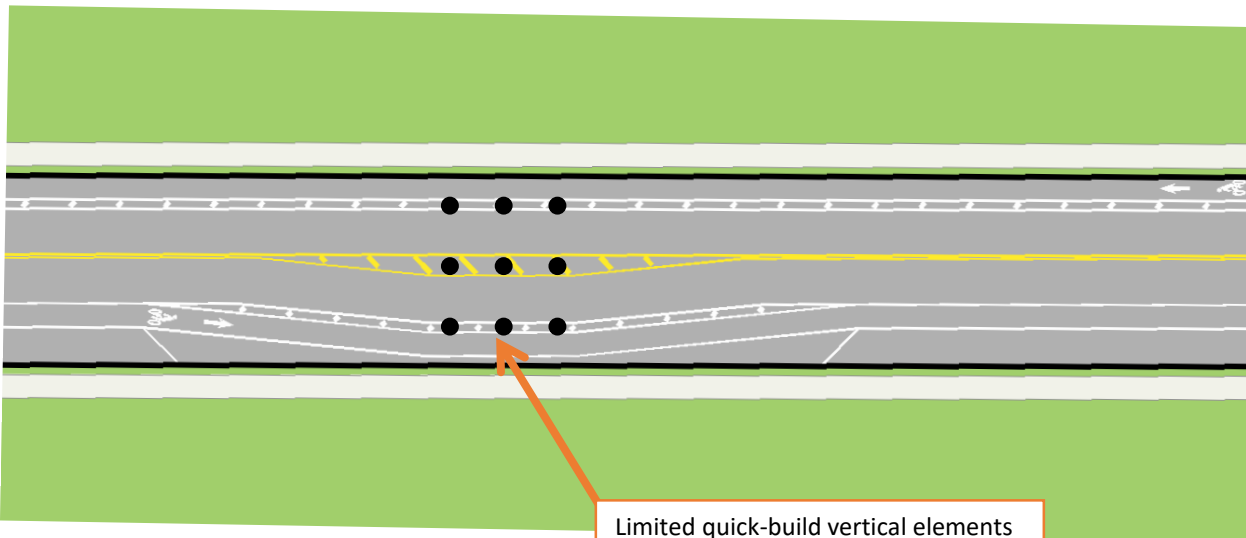
Bike Sharrows



Bike Lane



Buffered Bike Lane



Limited quick-build vertical elements
to enforce pinch point

Diagram Example with Vertical Elements to Enforce Pinch Point



Pinch Point Example with Permanent Materials

Yield Point

For illustrative purposes. Locations are approximate, and sizes are not to scale.



All-way Stop



Hardened
Centerline



Narrow
Edgelines

Mini Island



Mini Roundabout

Bumpouts

Lateral Shift

Pinch Point



Yield Point

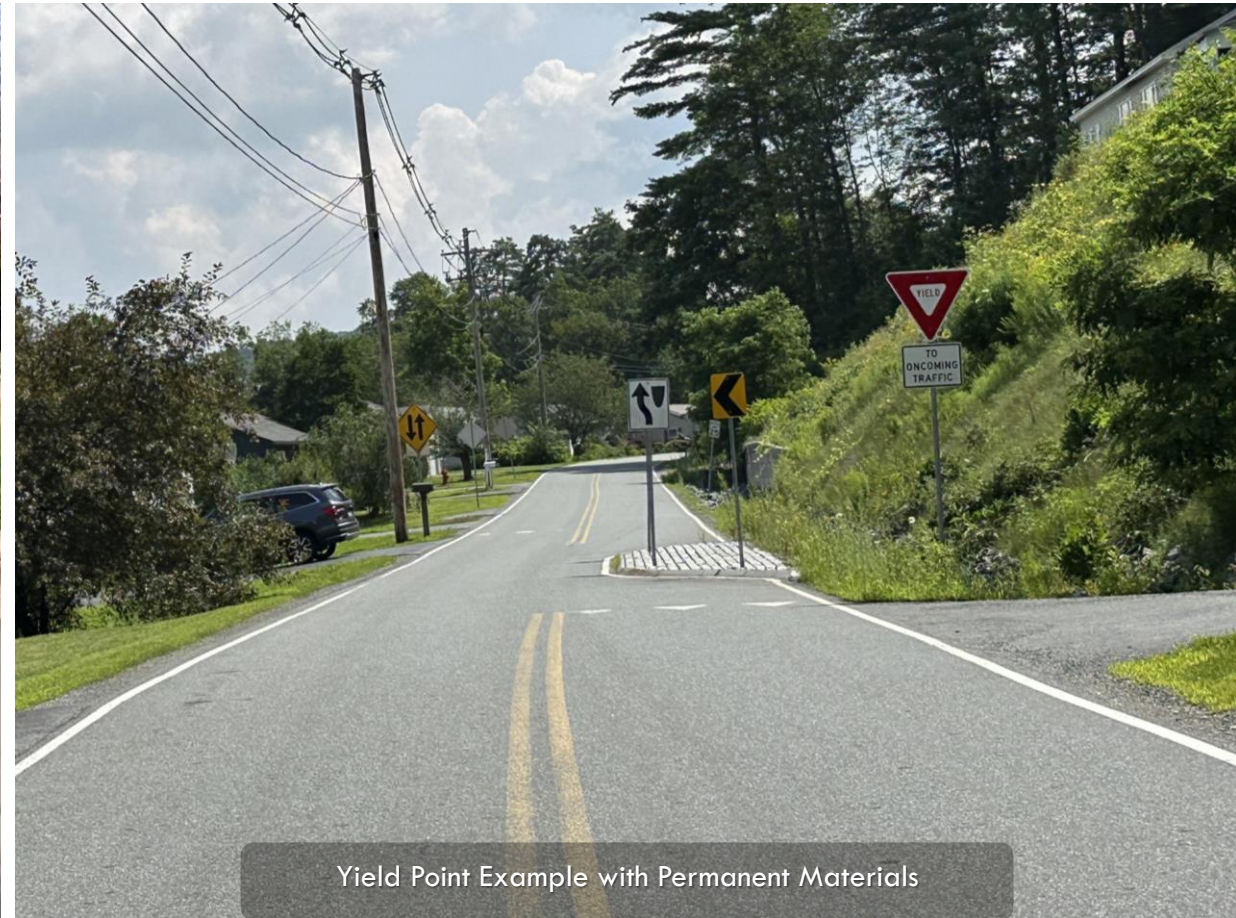
Bike Sharrows

Bike Lane

Buffered Bike
Lane



Yield Point Example with Temporary Materials



Yield Point Example with Permanent Materials

Bike “Sharrows”

For illustrative purposes. Locations are approximate, and sizes are not to scale.



All-way Stop



Mini Island



Lateral Shift



Bike Sharrows



Hardened
Centerline



Mini Roundabout



Pinch Point



Bike Lane



Narrow
Edgelines



Bumpouts



Yield Point



Buffered Bike
Lane



Hampton Street

Bike Lane

For illustrative purposes. Locations are approximate, and sizes are not to scale.



All-way Stop

Mini Island

Lateral Shift

Bike Sharrows



Hardened
Centerline



Mini Roundabout

Pinch Point



Narrow
Edgelines

Bumpouts



Yield Point

Bike Lane

Buffered Bike
Lane



Buffered Bike Lane

For illustrative purposes. Locations are approximate, and sizes are not to scale.



All-way Stop

Mini Island

Lateral Shift

Bike Sharrows



Hardened
Centerline



Mini Roundabout

Pinch Point

Bike Lane



Narrow
Edgelines

Bumpouts



Yield Point

Buffered Bike
Lane

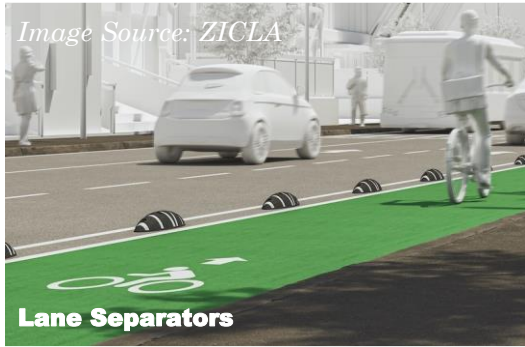


Main Street



Asylum Avenue (WH)

Alternative Materials





**Breakout
(Regroup by 7:15)**



Next Steps



Next Steps

- Share questions and comments with the team at SafeStreets@Hartford.gov or 860-757-9222. For design purposes, send comments by 8/23.
- After comments, the team will work on designs, to be posted at: HartfordCT.gov/PZ/SlowStreets. There will be an additional opportunity for comment.