

# Thank you for joining us at the 224 EcoSpace.







CITY OF HARTFORD

# ASYLUM AVE TRAFFIC CALMING





### 1. Purpose

1. Goals
2. Asylum Ave and Sigourney St Project

### 2. Proposed Configuration

1. Street Corridor Overview
2. Types of Treatment
3. Trident Intersection (Introduction)

### 3. Discussion

1. Roll Maps and Q&A Break-out groups





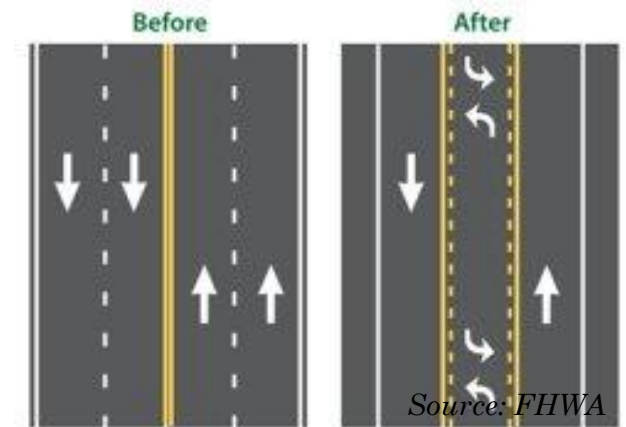
**“Road Diets can make the roadway environment safer for all users.”**  
(FHWA)

- **Reduce Crashes.**

*Studies indicate road diets can lead to a **19 to 47 percent reduction** in overall crashes. (FHWA)*

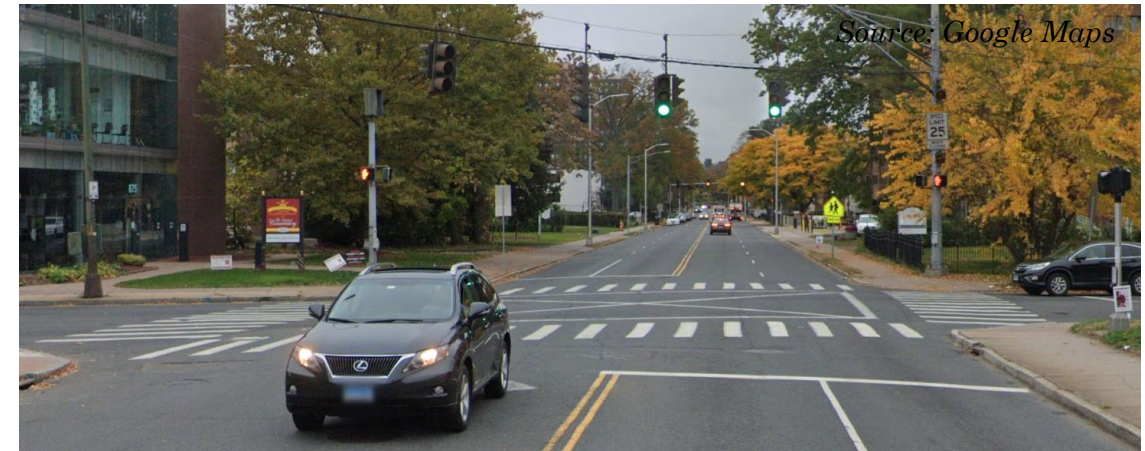
- **Reduce Speed.**

*Road diets can decrease the frequency of people driving more than 5 mph over the speed limit by 70 percent. (AARP)*



### **Crash data (2019-2021)**

- 161 total crashes in project area, including 48 injuries
- Asylum and Sigourney intersection is in the Top 10 for highest crash rates (59 crashes, including 25 injuries)





# CITY OF HARTFORD

## SPN 063-720 – Asylum Avenue & Sigourney Street LRARP



- **Goal:** Improve Road Safety
- **Project:**
  - Intersection treatment, traffic signal improvements, and road diet at the Asylum and Sigourney intersection
- **Funding:**
  - \$1.4 M from the state's Local Road Accident Reduction Program
- **Timeline:**
  - Public meeting was held in November 2021
  - Scheduled to be bid in Spring 2023
- **Capacity Analysis:**
  - Expected to increase delays for cars during afternoon peak hour, with minimal impacts the rest of the day
- **Connection to Current Project:**
  - Extended road diet to town line and Trident



# CITY OF HARTFORD

## STREET CORRIDOR OVERVIEW



Basemap Source: Google Maps

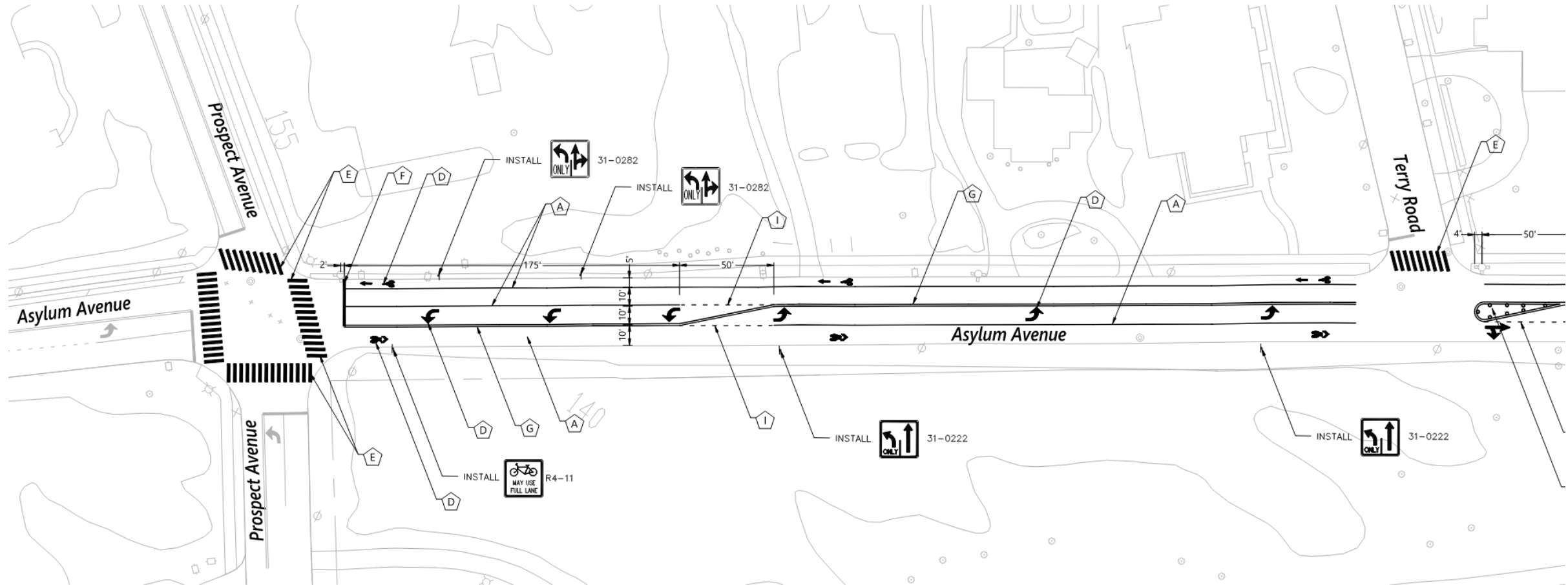


This graphic is only intended for general illustrative purposes and subject to change.



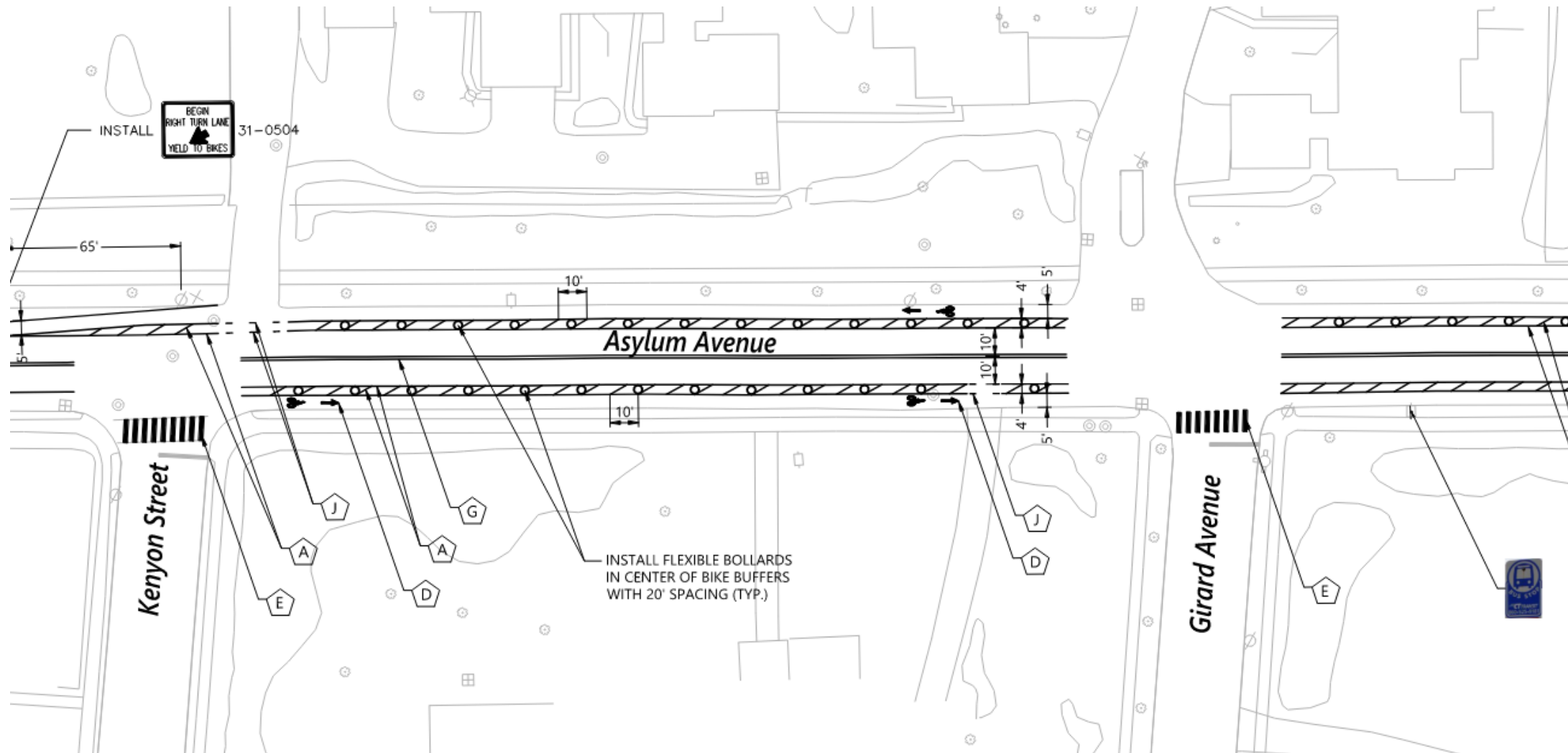
# CITY OF HARTFORD

## PROPOSED CONFIGURATION



# CITY OF HARTFORD

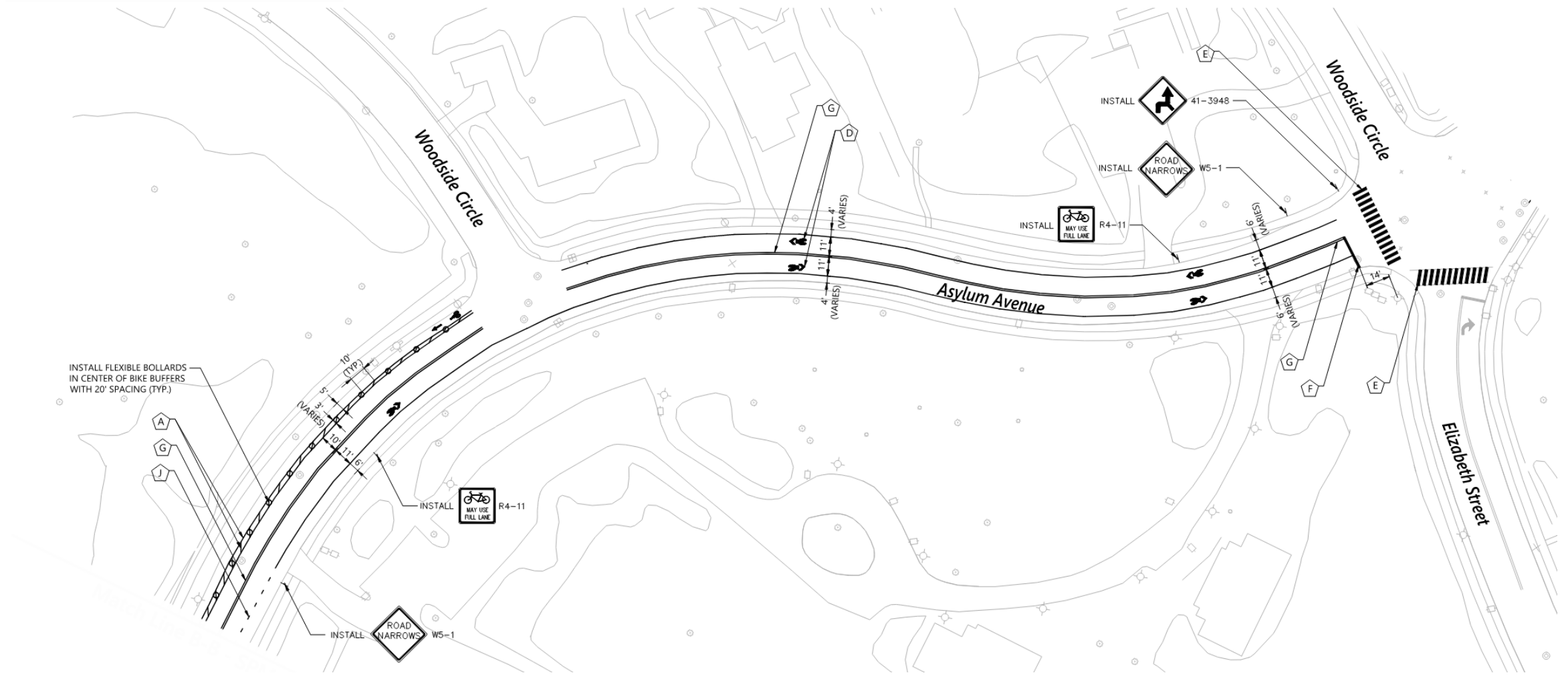
## PROPOSED CONFIGURATION





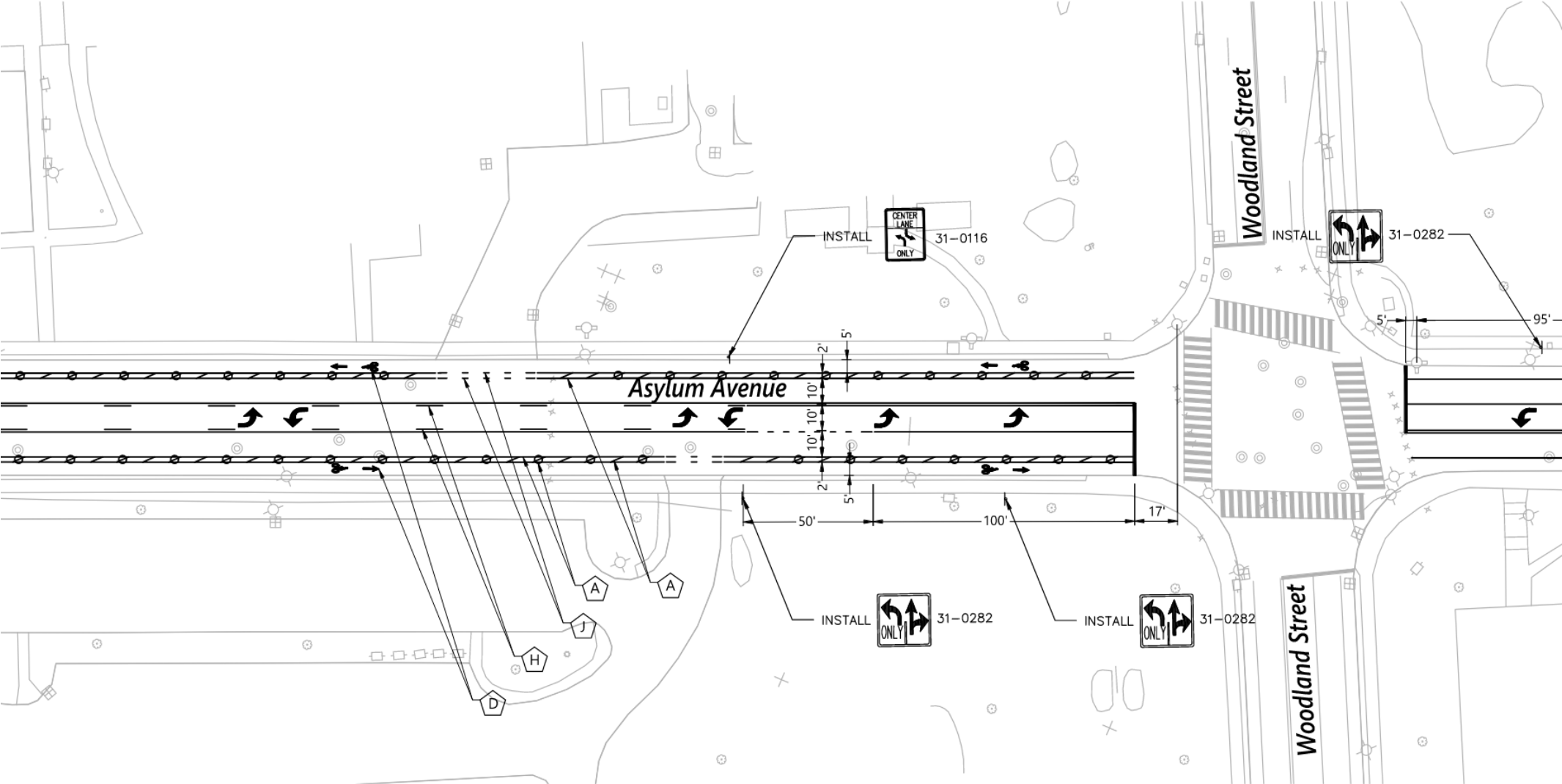
# CITY OF HARTFORD

## PROPOSED CONFIGURATION



# CITY OF HARTFORD

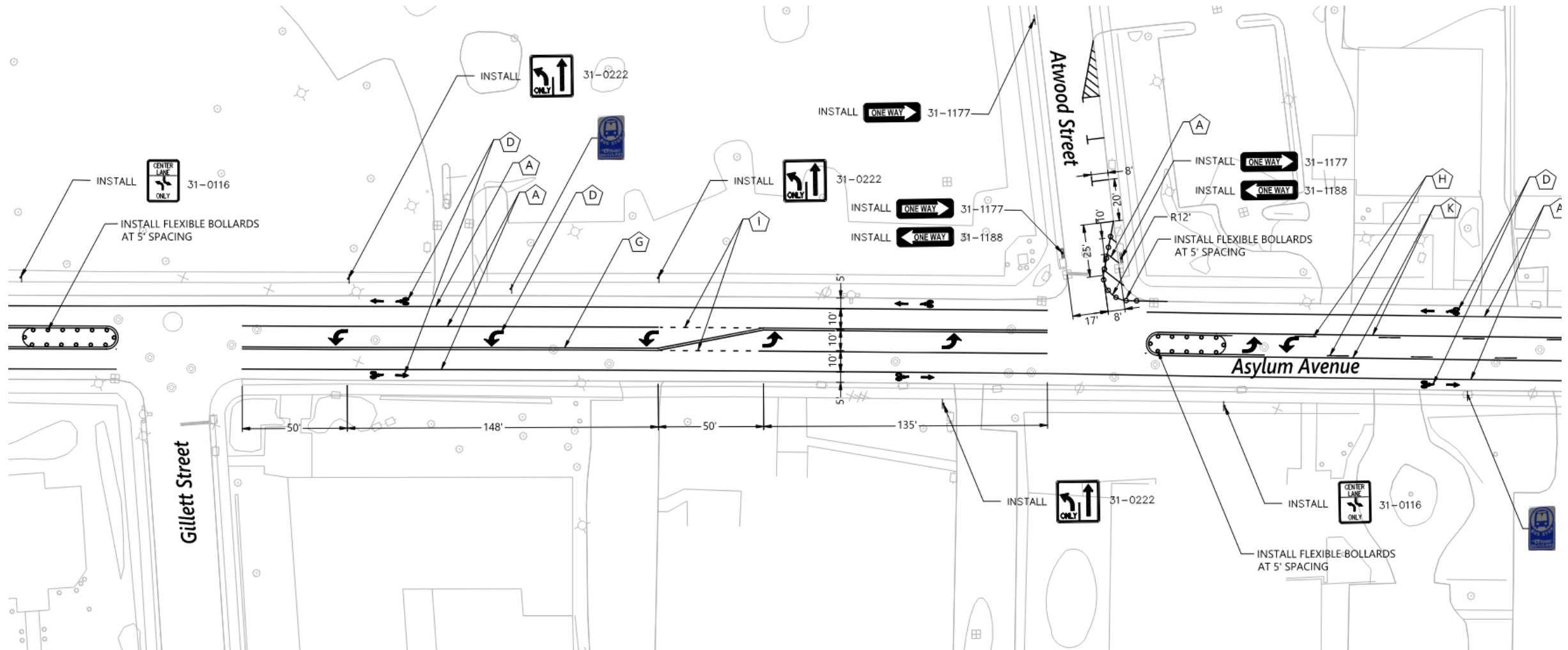
## PROPOSED CONFIGURATION





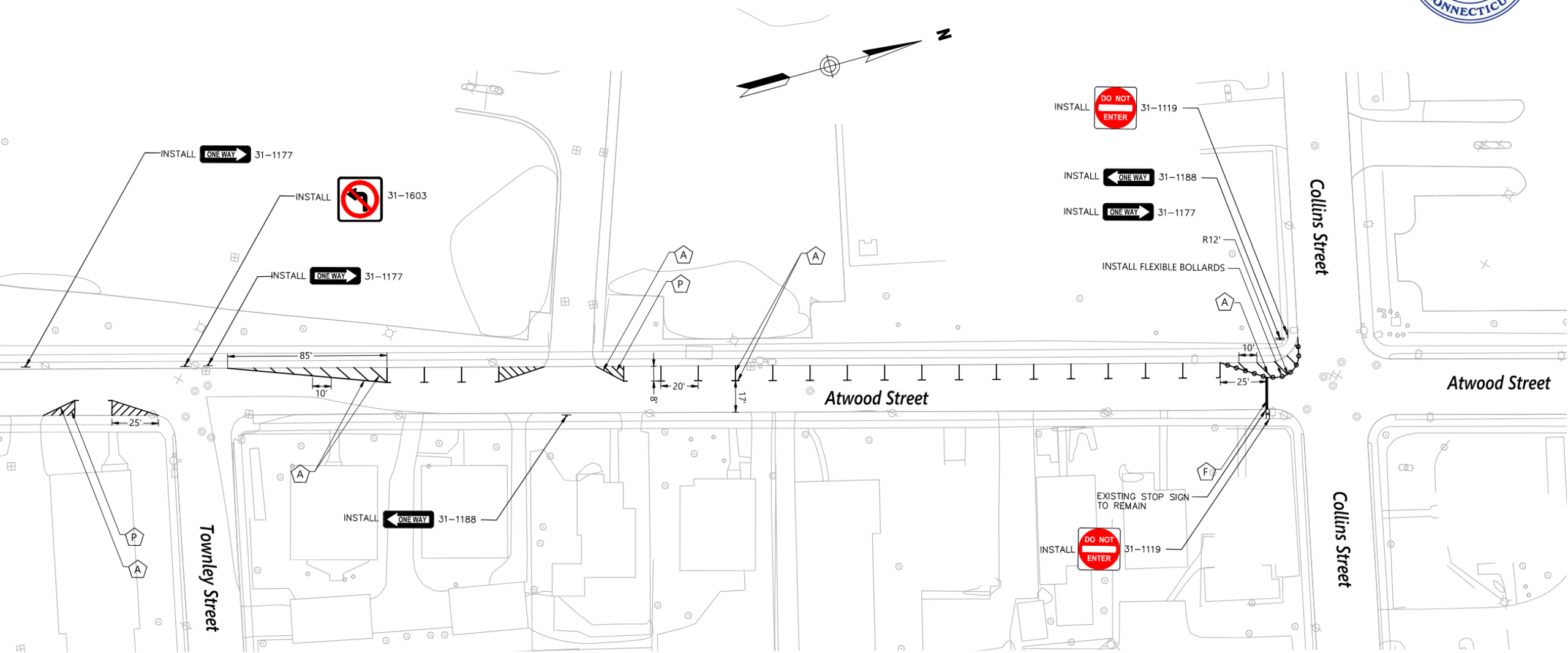
# CITY OF HARTFORD

## PROPOSED CONFIGURATION



# CITY OF HARTFORD

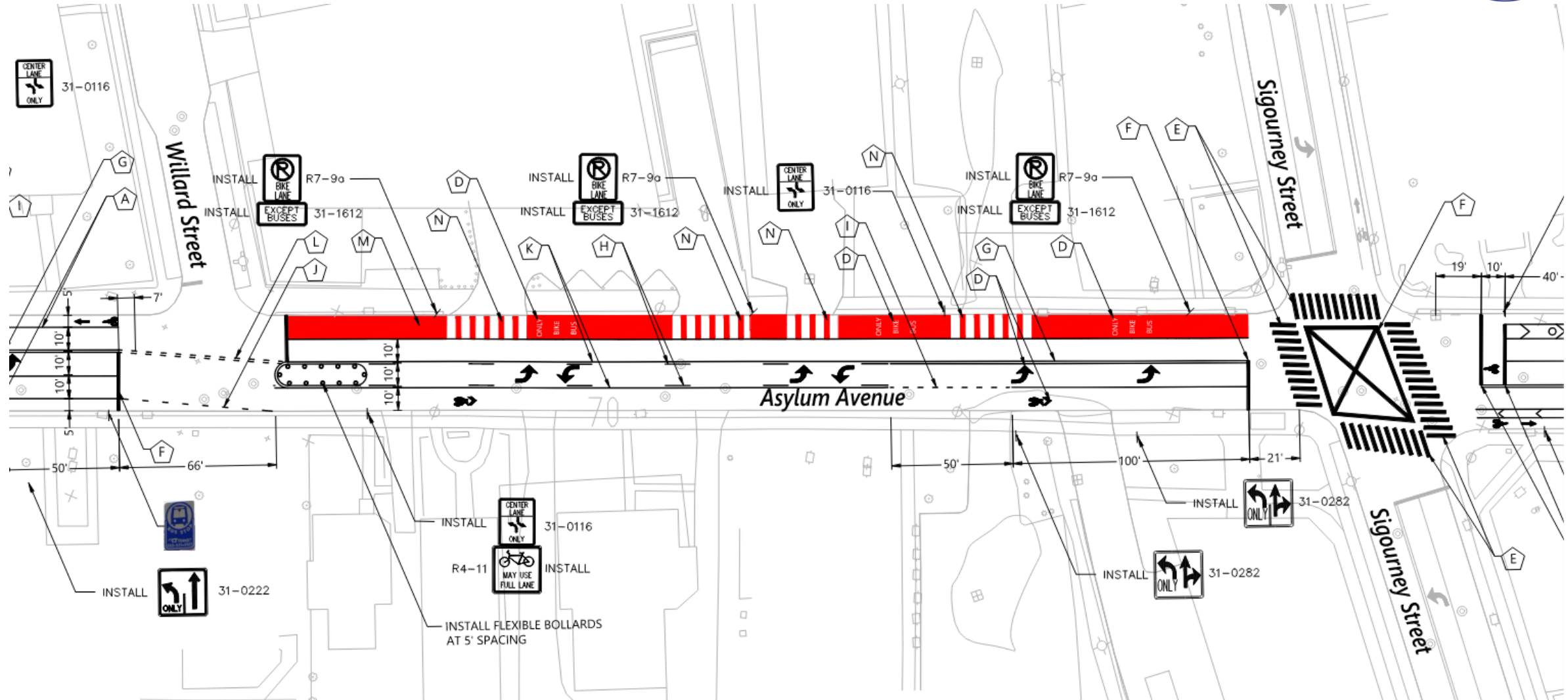
## PROPOSED CONFIGURATION





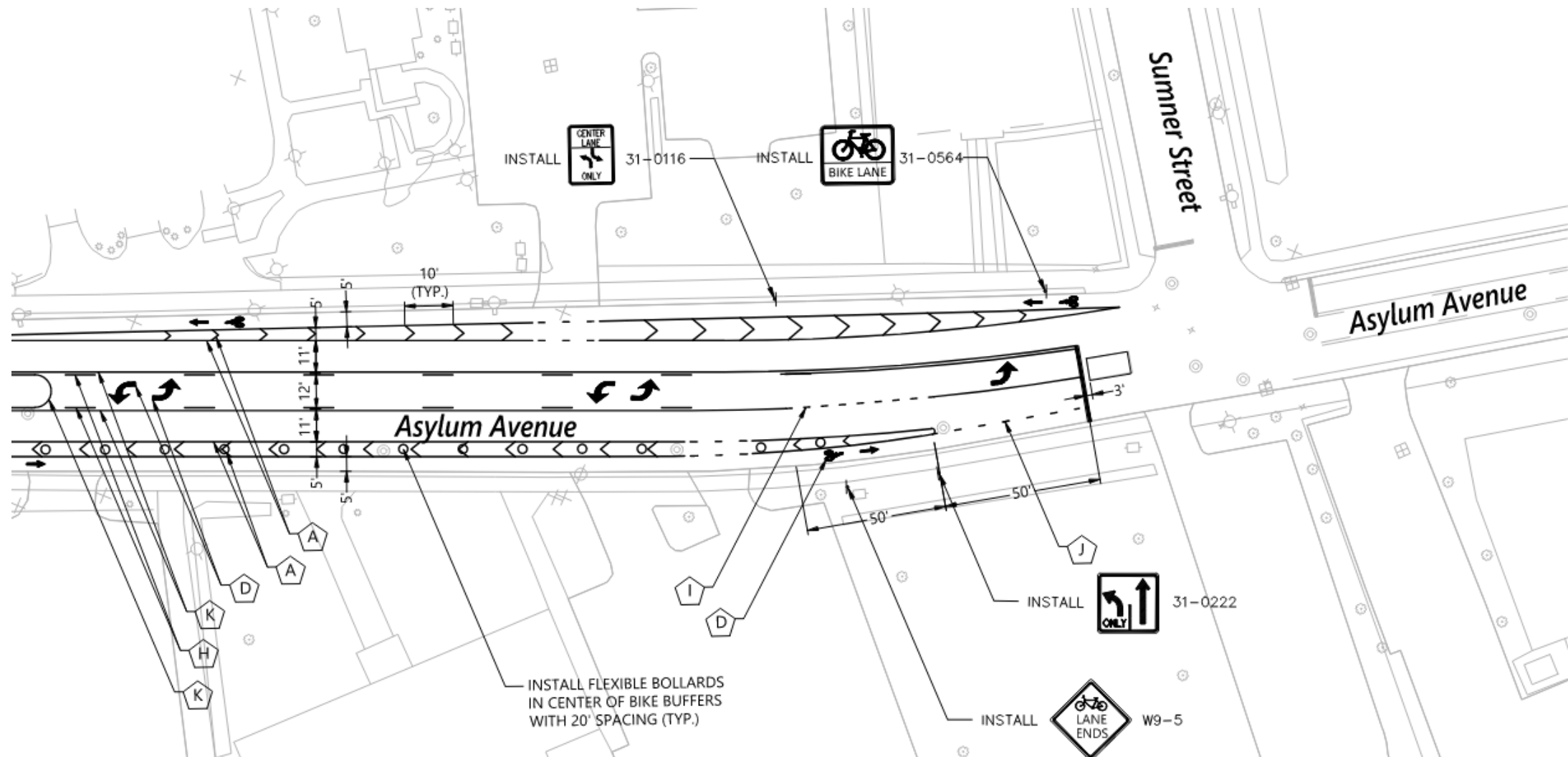
# CITY OF HARTFORD

## PROPOSED CONFIGURATION



# CITY OF HARTFORD

## PROPOSED CONFIGURATION





# CITY OF HARTFORD

## TYPES OF TREATMENTS





# CITY OF HARTFORD

## TRIDENT INTERSECTION



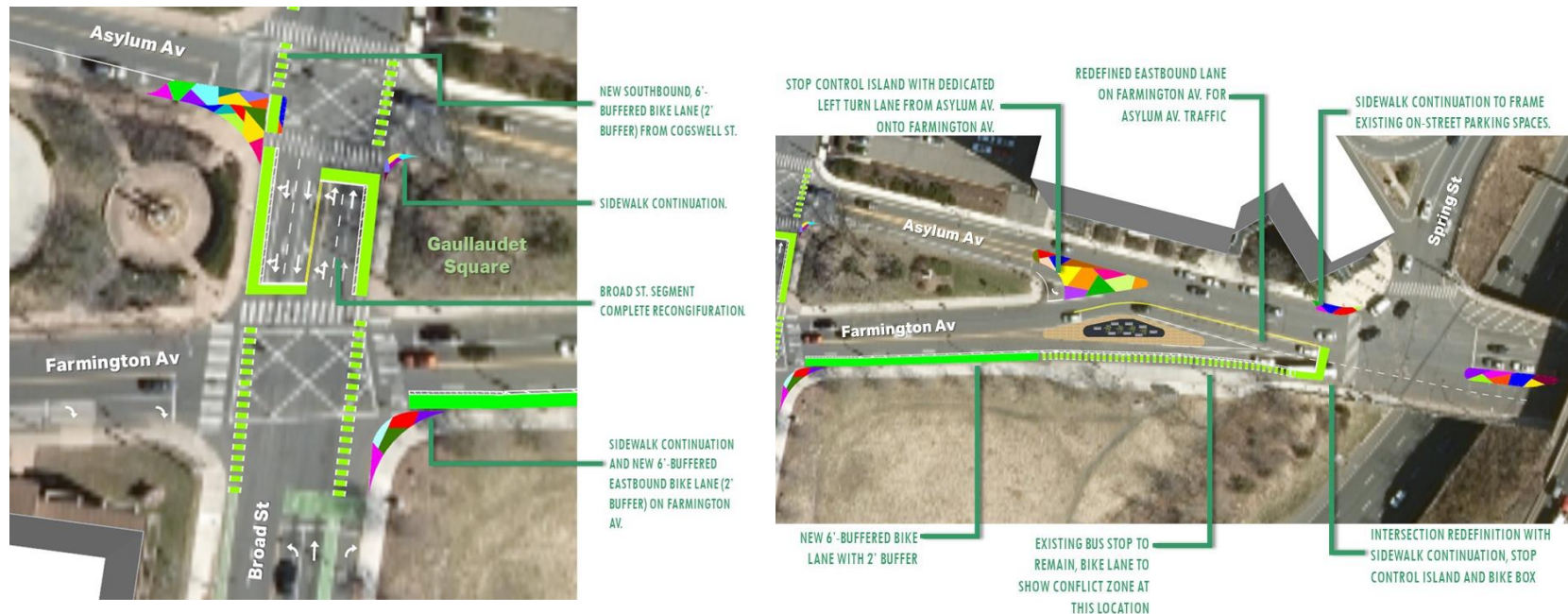


# CITY OF HARTFORD

## TRIDENT INTERSECTION



- Traffic analysis needed prior to trial implementation
- Reduce volume on Broad Street
- Better delineate turning movements (slow traffic)
- Extend existing bicycle facilities

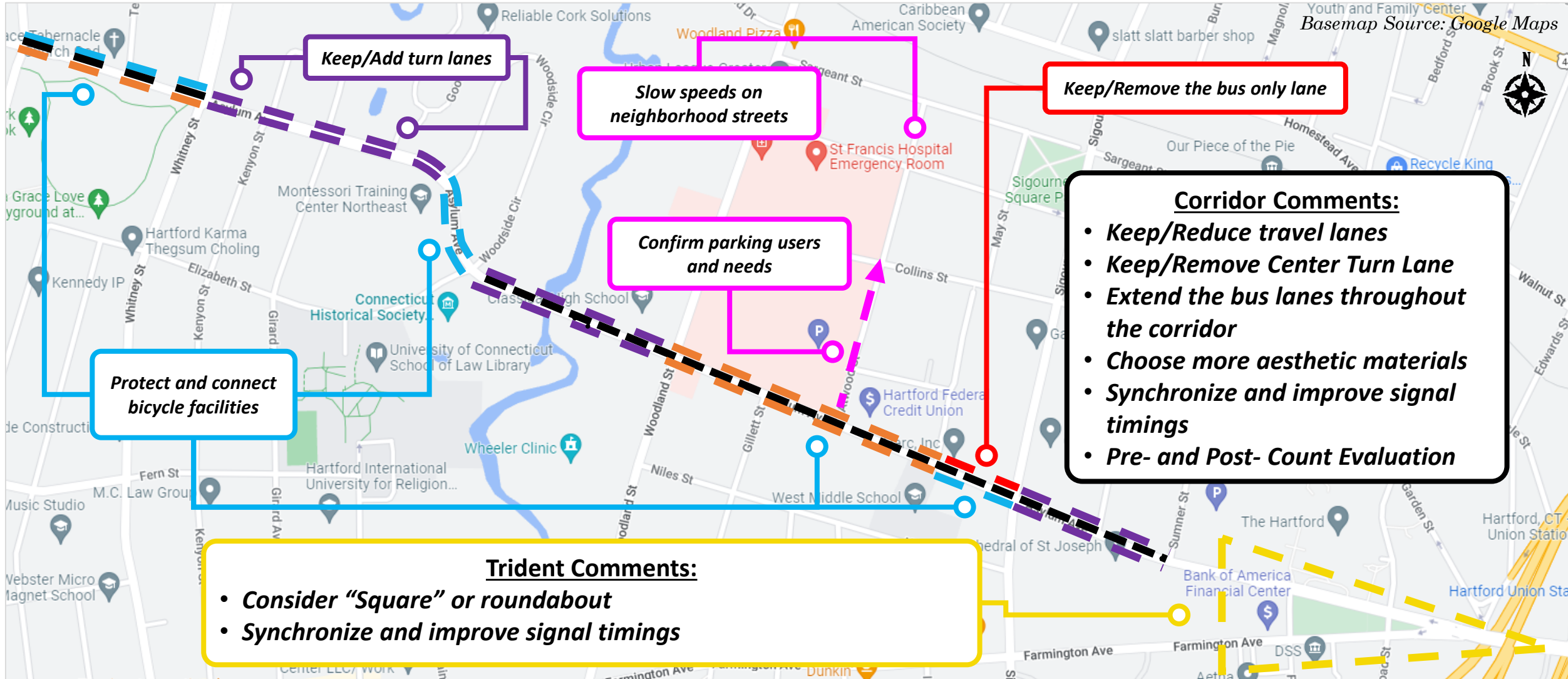


# CITY OF HARTFORD

## COMMENT OVERVIEW



Basemap Source: Google Maps



*This graphic is only intended for general illustrative purposes. It is not an exhaustive list of comments.*

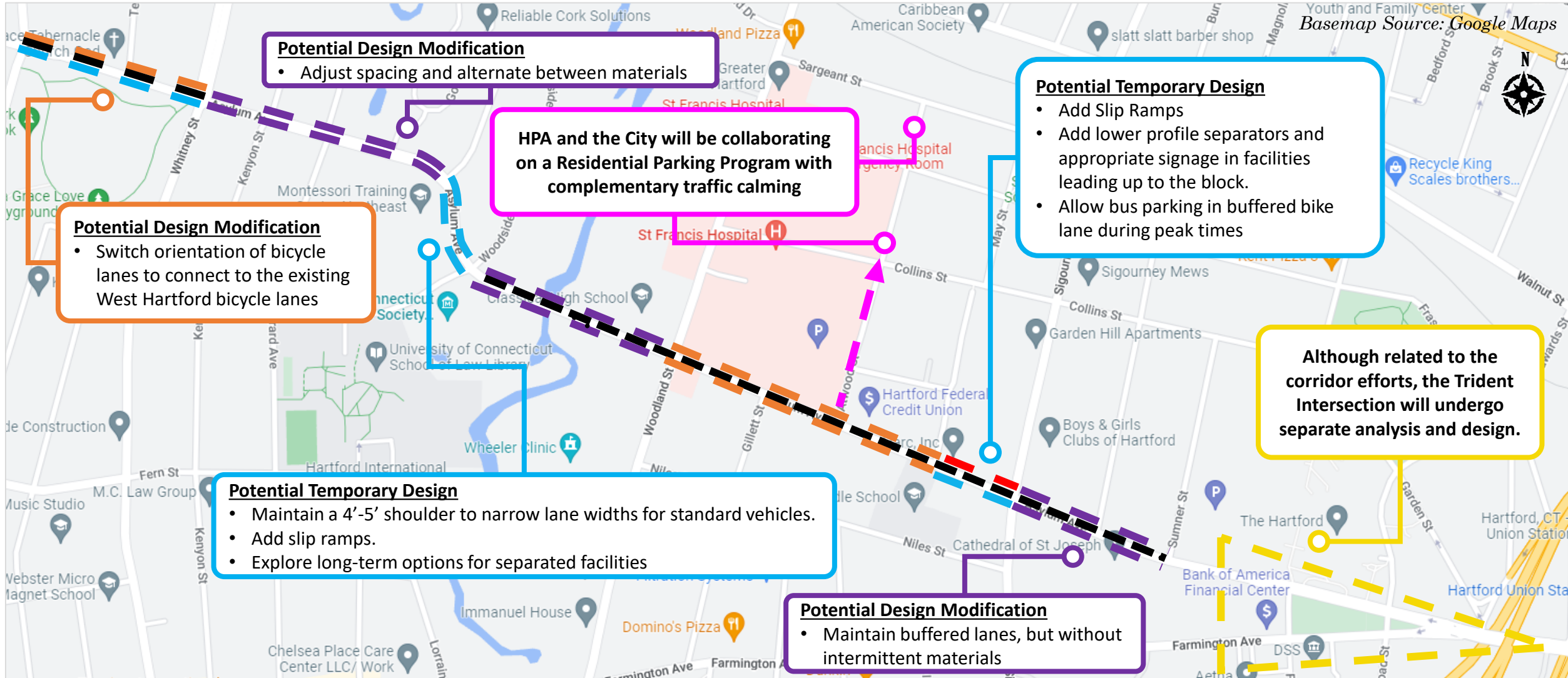


# CITY OF HARTFORD

## COMMENT OVERVIEW



Basemap Source: Google Maps



*This graphic is only intended for general illustrative purposes and is subject to change.*



# CITY OF HARTFORD

## ALTERNATIVE MATERIALS







# Let's Discuss!





## **WHERE TO FIND US**

Email: [safestreets@hartford.gov](mailto:safestreets@hartford.gov)

Website: [www.hartfordct.gov/pz/AsylumAveRoadDiet](http://www.hartfordct.gov/pz/AsylumAveRoadDiet)

## **Sign Up for Our Mailing List!**

Visit [www.hartfordct.gov/pz](http://www.hartfordct.gov/pz), and Click the "**Join**" button.

---